

O‘ZBEKISTON RESPUBLIKASI VAZIRLAR MAHKAMASI
DAVLAT TEST MARKAZI

REPITISION TEST TOPSHIRUVCHILAR UCHUN

SAVOLLAR KITOBI

ABITURIYENT: _____ F.I.O. _____ Imzo _____

ABITURIYENT DIQQATIGA!

Test topshiriqlarini yechishdan avval savollar kitobini varaqlab, unda har bir fan bo‘yicha 36 ta savol mavjudligini tekshiring. Agar savollar soni kamligi aniqlansa yoki savollar savollar kitobi raqami bilan javoblar varag‘i raqami bir xil bo‘lmasa, darhol auditoriya rahbariga ma‘lum qiling.

Savollar kitobida abituriyentning familiyasi, ismi, otasining ismi xato to‘ldirilgan yoki to‘ldirilmagan, va imzosi qo‘yilmagan hollarda e‘tirozi ko‘rib chiqilmaydi.

Kitob tipi: **55 (636624)**

FANLAR:

Blok 1: Matematika (informatika bilan)

Blok 2: Fizika

Blok 3: Ingliz tili

Savollar kitobi raqami: **1000072**

Toshkent – 2014

MATEMATIKA (INFORMATIKA BILAN)

1. $\int x \sin 2x dx$ aniqmas integralni hisoblang.
 - A) $4\sin x + x\cos x + c$
 - B) $\frac{1}{4}\sin 2x + \frac{1}{2}x\cos 2x + c$
 - C) $\frac{1}{4}\sin 2x - \frac{1}{2}x\cos 2x + c$
 - D) $4\sin 2x - 2x\cos 2x + c$
2. \overline{aa} va \overline{bb} ikki xonali sonlar bo'lib, $(\overline{aa})^2 + (\overline{bb})^2 = 2057$ va $a + b = 5$ bo'lsa, $a \cdot b$ ni toping.
 - A) 15 B) 4 C) 6 D) 8
3. Agar $\frac{3^x + 9^x + 18^x}{2^x + 6^x + 12^x} = \frac{24}{81}$ bo'lsa, x ni toping.
 - A) -5 B) -2 C) -3 D) -4
4. $1 - \frac{2}{5 - \frac{6}{5 - \frac{6}{x}}}$ ifoda x ning nechta qiymatida ma'noga ega emas?
 - A) 4 B) 1 C) 2 D) 3
5. To'rtburchakli muntazam prizma asosining yuzi 144 sm^2 , balandligi 14 sm. Prizma diagonalini (sm) toping.
 - A) 22 B) 12 C) 20 D) 21
6. Tekislikdan a uzoqlikda joylashgan nuqtadan tekislik bilan 30° li burchak hosil qiluvchi ikkita og'ma o'tkazilgan. Ularning tekislikdagi proyeksiyalari o'zaro 120° li burchak hosil qilsa, og'malarning uchlari orasidagi masofani aniqlang.
 - A) $2a$ B) $\sqrt{3}a$ C) $\sqrt{2}a$ D) $3a$
7. $\frac{(x^2 + x + 1)x^2}{x^2 - 5x + 6} < 0$ tengsizlikni yeching.
 - A) (2; 3)
 - B) [2; 3]
 - C) $(-\infty; 2]$
 - D) $(-\infty; 2] \cup [3; \infty)$
8. O'suvchi geometrik progressiyada $a_3 \cdot a_{10} = 16$ bo'lsa, $a_1 \cdot a_{12}$ ni toping.
 - A) 8 B) 24 C) 16 D) 14
9. Ikkita doira radiuslari 1:2 nisbatda. Katta doira aylanasining uzunligi 8π . Kichik doira yuzini toping.
 - A) π B) 2π C) 8π D) 4π
10. $\sqrt{x - 3 - 2\sqrt{x - 4}} + \sqrt{x - 4\sqrt{x - 4}} = 1$ tenglamaning ildizlarini toping.
 - A) [6; 8] B) [6; 9] C) [3; 4] D) [5; 8]
11. Silindrga shar ichki chizilgan. Silindr o'q kesimining diagonalini l ga teng bo'lsa, shar sirtining yuzini hisoblang.
 - A) $\frac{\pi}{4} \cdot l^2$ B) $\frac{\pi}{2} \cdot l^2$ C) $\frac{\pi}{3} \cdot l^2$ D) $\pi \cdot l^2$
12. $\frac{a^3 - 2a^2 + 5a + 26}{a^3 - 5a^2 + 17a - 13}$ kasrni qisqartiring.
 - A) $\frac{a + 2}{a - 2}$ B) $\frac{a - 2}{a + 2}$ C) $\frac{1 - a}{a + 2}$ D) $\frac{a + 2}{a - 1}$
13. Parallelogrammning uchta ketma-ket $A(-3; -2; 0)$, $B(3; -3; 1)$ va $C(5; 0; 2)$ uchlari berilgan. \vec{AC} va \vec{BD} vektorlar orasidagi burchakni toping.
 - A) 150° B) 60° C) 135° D) 120°
14. $f(x) = x^2 + 2x + 1$ funksiyaning hosilasini toping.
 - A) $2x - 2$ B) $2x + 2$ C) $x^2 + 2$ D) $2x^2 + 2$
15. Velosipedchi bir soatda 15,75 km, piyoda esa $4\frac{1}{2}$ km yo'l bosadi. Velosipedchining tezligi piyodaning tezligidan necha marta ortiq?
 - A) 3,75 B) 11,25 C) 3,5 D) 11,5
16. ABC uchburchakda $AB=0,6$; $BC=0,8$; $AC=0,5$ bo'lsa, B burchak kosinusini toping.
 - A) $\frac{25}{31}$ B) $\frac{24}{31}$ C) $\frac{24}{33}$ D) $\frac{25}{32}$
17. $\frac{2^{19} \cdot 27^3 + 15 \cdot 4^9 \cdot 9^4}{6^9 \cdot 2^{10} + 12^{10}}$ ni hisoblang.
 - A) 2 B) $\frac{1}{3}$ C) 1 D) $\frac{1}{2}$

18. $h(x) = |x|$, $g(x) = \frac{2x+3}{3x-1}$, $f(x) = \sqrt{x+1}$

bo'lsa, quyidagilardan qaysi biri to'g'ri?

A) $h(f(x)) = \sqrt{|x+1|}$

B) $f(h(x)) = \sqrt{|x|+1}$

C) $g(h(x)) = \frac{2|x|+3}{3|x|+1}$

D) $f(g(x)) = \frac{\sqrt{5x+4}}{\sqrt{3x-1}}$

19. x, y butun sonlar uchun $-6 \leq x \leq 8$,
 $-9 \leq y \leq 12$ va $x+y \neq 0$ bo'lsa, $\frac{x-y}{x+y}$ ning
eng katta qiymatini toping.

A) 32 B) 24 C) 17 D) 19

20. $a = \sqrt{5} + \sqrt{6}$, $b = \sqrt{3} + \sqrt{8}$, $c = 2 + \sqrt{7}$
sonlarni o'sish tartibida joylashtiring.

A) $b < c < a$ B) $c < b < a$ C) $a < b < c$
D) $b < a < c$

21. Agar arifmetik progressiyada $a_1 + a_2 + a_3 = 0$
va $a_1^2 + a_2^2 + a_3^2 = 50$ bo'lsa, uning ayirmasini
toping.

A) ± 5 B) 4 C) 2 D) 1

22. Agar uch xonali sondan 6 ni ayirsak, ayirma
7 ga bo'linadi, 7 ni ayirsak, ayirma 8 ga
bo'linadi, 8 ni ayirsak, ayirma 9 ga bo'linadi.
Bu sonni toping.

A) 167 B) 936 C) 143 D) 503

23. $\left(\frac{1}{a} + \frac{1}{b} - \frac{2c}{ab}\right)(a+b+2c)$
 $\frac{1}{a^2} + \frac{1}{b^2} + \frac{2}{ab} - \frac{4c^2}{a^2b^2}$ ifodani

soddalashtiring va uning son qiymatini toping.

$a=7,4$; $b = \frac{5}{37}$.

A) $\frac{4}{5}$ B) $\frac{1}{2}$ C) 0 D) 1

24. $\frac{\sin 1^\circ \cdot \sin 2^\circ \cdot \dots \cdot \sin 45^\circ}{\cos 46^\circ \cdot \cos 47^\circ \cdot \dots \cdot \cos 89^\circ}$ ni hisoblang.

A) $\frac{1}{2}$ B) $\frac{\sqrt{2}}{2}$ C) $\frac{\sqrt{3}}{2}$ D) 1

25. $ABCD$ parallelogrammda $BD = 4\sqrt{2}$,
 $\angle ADB = 60^\circ$, $\angle CDB = 75^\circ$ bo'lsa, AB ni
toping.

A) $5\sqrt{3}$ B) $4\sqrt{3}$ C) $6\sqrt{2}$ D) $3\sqrt{3}$

26. Aylanaga tashqi chizilgan muntazam
oltiburchakning tomoni $2\sqrt{3}$ sm bo'lsa, shu
aylanaga ichki chizilgan kvadratning yuzini
(sm²) hisoblang.

A) 18 B) 20 C) 16 D) 12

27. $y = \ln ||x| + 1|$ funksiyaning aniqlanish sohasini
toping.

A) $(1; \infty)$

B) $(-\infty; \infty)$

C) $(0; \infty)$

D) $(-\infty; 0)$

28. $f\left(\frac{3x-1}{x+2}\right) = \frac{x+1}{x-1}$ bo'lsa, $f(x)$ ni toping.

A) $\frac{x+4}{3x-2}$ B) $\frac{x+1}{x-1}$ C) $\frac{2x+1}{3-x}$

D) $\frac{3x-1}{x+2}$

29. XOY uchburchakda $\angle XOY = 90^\circ$. M va N
nuqtalar mos ravishda OX va OY tomonlarning
o'rtalari. Agar $XN=19$ va $YM=22$ bo'lsa, XY
ni toping.

A) 14 B) 13 C) 28 D) 26

30. Uchlari $A(3; 0)$, $B(-3; 8)$, $C(3; 8)$ nuqtalarda
bo'lgan uchburchakka ichki chizilgan aylana
tenglamasini toping.

A) $(x-2)^2 + (y+6)^2 = 4$

B) $(x-3)^2 + (y+1)^2 = 2$

C) $(x-1)^2 + (y-6)^2 = 4$

D) $(x+3)^2 + (y-2)^2 = 1$

31. 3 terabayt axborotni baytlarda ifodalang.

A) 3^{40} bayt B) $3 \cdot 2^{40}$ bayt C) 6^{40} bayt

D) 2^{40} bayt

32. Tashkil etuvchi barcha sodda mulohazalar rost
bo'lganda quyidagilardan qaysi birining natijasi
rost bo'ladi?

A) $(A \vee \neg B) \wedge \neg(C \vee D)$

B) $A \wedge \neg B \vee C \wedge \neg D$

C) $A \vee B \wedge \neg C \vee \neg D$

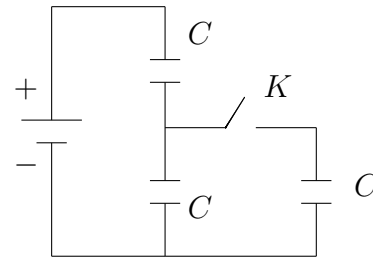
D) $\neg A \vee (B \vee C) \wedge \neg D$

33. Faylning xususiy nomi nechta belgidan iborat bo'lishi mumkin?
 A) 1 tadan 8 tagacha
 B) 1 tadan 64 tagacha
 C) operatsion sistema va dasturga bog'liq
 D) 1 tadan 255 tagacha
34. MS Word 2003 dasturida uskunalar panelini sozlash bo'limi qaysi menyuda joylashgan?
 A) Файл(Fayl) B) Правка(Tahrir)
 C) Вид(Ko'rish) D) Формат(Format)
35. Tashkil etish texnologiyasiga ko'ra web-sahifalar necha va qanday turga bo'linadi?
 A) 2 turga: statik, dinamik
 B) 3 turga: statik, dinamik, interaktiv
 C) 4 turga: statik, dinamik, interaktiv, input type
 D) 2 turga: input type va interaktiv
36. Paskal dasturi lavhasidagi natijani aniqlang.
 begin X:=2; p:=1; 1:P:=P*(2*x-2); X:=X+3; if X<=6 then goto 1; writeln(P); end.
 A) 16 B) 20 C) 2 D) 24

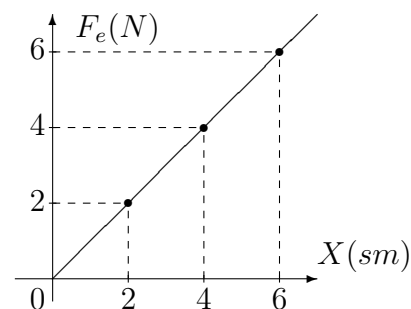
FIZIKA

1. Tutash idishlarda balandligi 10,35 sm bo'lgan suv ustuni, balandligi 11,5 sm bo'lgan mineral moy ustuni bilan muvozanatlashib turgan bo'lsa, shu moyning zichligini (g/sm^3) aniqlang.
 A) 0,8 B) 0,9 C) 0,7 D) 1
2. Ikkita proton qarama-qarshi yo'nalishda harakatlanmoqda. Ular o'rtasida mavjud bo'luvchi barcha ta'sir kuchlarini aniqlang. 1 - elektr tortishish; 2 - elektr itarishish; 3 - magnit tortishish; 4 - magnit itarishish; 5 - gravitasion tortishish
 A) 2, 3, 5 B) 1, 3, 5 C) 1, 4, 5 D) 2, 4, 5

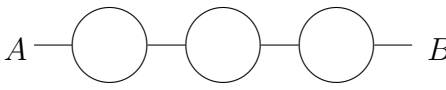
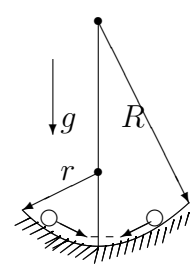
3. Quyidagi sxema bo'yicha K kalit ochiq paytidagi q zaryad kalit yopilgandan keyin nimaga teng bo'ladi? Ikkala holda ham kuchlanish o'zgarmas deb hisoblang.



- A) $3q/4$ B) $4q$ C) $4q/3$ D) $3q$
4. Gaz razryadi jarayonida qanday zarrachalar ishtirok etadi?
 A) elektronlar, musbat va manfiy ionlar
 B) faqat elektronlar
 C) elektronlar va kovaklar
 D) faqat ionlar
5. Massasi 2000 kg bo'lgan avtomobilni $0,6 \text{ m/s}^2$ tezlanish bilan shatakka olib ketilayotganda trosning cho'zilishini (mm) toping. Trosning bikrlilik koeffitsiyenti 100 kN/m ga teng.
 A) 0,24 B) 24 C) 12 D) 0,12
6. Grafikdan foydalangan holda elastiklik kuchining bajargan ishini toping.



- A) 0,2 B) 0,08 C) 0,18 D) 0,8
7. Massasi 4,9 kg bo'lgan jism 2,5 kg massali qo'zg'almas jism bilan to'qnashgandan keyin bu ikki jismlar sistemasining kinetik energiyasi 5 J ga teng bo'lib qolgan. Urilishni markaziy va noelastik hisoblab birinchi jismning urilishdan oldingi kinetik energiyasini (J) toping.
 A) 8,0 B) 8,5 C) 7,0 D) 7,55

8. Agar metall sirtlari 350 va 540 nm to'liq uzunlikli nurlanish bilan galma-gal yoritilsa, u holda fotoelektronlarning maksimal tezliklari bir-biridan 2 marta farq qiladi. Bu metaldan elektronlarning chiqish ishini (J) aniqlang.
 $h=6,63 \cdot 10^{-34}$ J·s
 A) $3 \cdot 10^{-19}$ B) $25 \cdot 10^{-29}$ C) $30 \cdot 10^{-29}$
 D) $30 \cdot 10^{-30}$
9. Agar tok kuchi 30 A bo'lganda tashqi zanjirdagi quvvat 180 W, tok kuchi 10 A bo'lganda esa 100 W bo'lsa, tok manbaining ichki qarshiligi (Ω) va EYuK (V) qancha?
 A) 0,2; 12 B) 0,4; 6 C) 0,2; 3 D) 5; 10
10. 500 W quvvatli elektroplitka kuchlanish 127 V li sanoat tarmog'iga ($\nu=50$ Hz) ulangan. Plitka zanjirida tok kuchining (A) vaqtga bog'lanish tenglamasini ko'rsating. Kuchlanish sinus qonuniga ko'ra o'zgaradi deb hisoblang.
 A) $I = 127 \sin 100\pi t$ B) $I = 5,6 \sin 50t$
 C) $I = 5,6 \sin 100\pi t$ D) $I = 4 \sin 100\pi t$
11. Agar azotning ionlashuv potensial 14,5 V bo'lsa, azot atomini ionlashtirish uchun elektron qanday eng kichik tezlikki (m/s) ega bo'lish kerak?
 A) $2,3 \cdot 10^6$ B) $2,6 \cdot 10^6$ C) $3,6 \cdot 10^6$
 D) $1,8 \cdot 10^6$
12. Temperaturasi 27°C bo'lgan ideal gazning hajmi 10 l edi. $P = \text{const}$ sharoitda uning 327°C gacha isitilgandagi hajmi (l) qancha bo'ladi?
 A) 23,6 B) 30 C) 11,8 D) 20
13. Rasmda tasvirlangan har bir halqa qarshiligi R ga teng bo'lgan o'tkazgichdan tayyorlanib, ular rasmda ko'rsatilgandek ulansa A va B nuqtalar orasidagi umumiy qarshilik nimaga teng bo'ladi?
- 
- A) $7R/2$ B) $5R/2$ C) $0,75R$ D) $1,5R$
14. Massa 70 kg bo'lgan odam trapetsiya shaklidagi taxtani o'rtasida o'tiribdi. Taxta uzunligi 8 m bo'lgan 2 ta arqonlarga osilgan. Tebranish vaqtida odam muvozanat vaziyatdan 6 m/s tezlik bilan o'tadi. Shu momentda har bir arqonning taranchlik kuchi (N) qanday?
 A) 400 B) 600 C) 500 D) 450
15. Slindrik idishga teng massali simob ($\rho_{sim}=13600$ kg/m³) va kerosin ($\rho_{ker}=800$ kg/m³) quyildi. Ularning umumiy balandligi 18 sm bo'lsa, idish tubidan 1 sm yuqoridagi bosimni (Pa) aniqlang. $g=10$ m/s²
 A) 1224 B) 680 C) 1360 D) 2720
16. Ko'ndalang kesim yuzi 60 sm² bo'lgan kontur ichidagi magnit oqimi $0,3$ mWb ga teng. Kontur ichidagi maydon induksiyasini (mT) toping.
 A) 18 B) 50 C) 200 D) 0
17. Elektr choynagi 220 V kuchlanishga ulangan holda $3,2$ A tok iste'mol qilib 1 l suvni 12 minutda qaynatdi. Suvning boshlang'ich harorati 20°C bo'lsa, FIKni (%) toping.
 $c_{suv}=4200 \frac{\text{J}}{\text{kg} \cdot ^\circ\text{C}}$
 A) 84 B) 66 C) 98 D) 71
18. Koptok yerdan qaytib $2h$ balandlikka ko'tarilishi uchun uni, h balandlikdan pastga qanday v_0 boshlang'ich tezlik bilan tashlash kerak? Urilish absolut elastik deb hisoblansin.
 A) $v = \sqrt{2gh}$ B) $v = g/h$ C) $v = gh$
 D) $v = 2gh$
19. Sharcha nov ichida tebrama sirg'anmoqda. Novni bir yoni r egrilikka, ikkinchi yoni R egrilikka ega. Sharchani tebranish davrini aniqlang.
- 
- A) $\frac{\pi}{\sqrt{g}}(\sqrt{r} + \sqrt{R})$
 B) $2\pi\sqrt{\frac{r^2 + R^2}{g}}$
 C) $2\pi\sqrt{\frac{rR}{g}}$
 D) $\pi\sqrt{\frac{r + R}{g}}$

20. Suyuqlikning idish devoriga bosim kuchi F idish tubiga bo'lgan bosim kuchiga teng bo'lishi uchun R radiusli silindrik idishga qanday balandlik H gacha suv qiyish kerak?
 A) $R = H$ B) $R = 2H$ C) $R = H/2$
 D) $R = 4H$

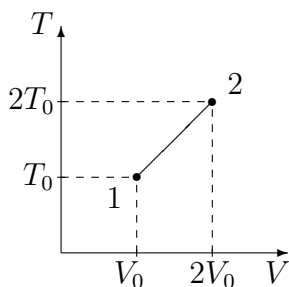
21. Yorug'likka nisbatan shaffof moddadan yasalgan va qavariqlik radiusi 40 sm bo'lgan bir tomonlama qavariq linzaning optik kuchi $+2$ dptr. Linza tayyorlangan moddaning sindirish ko'rsatkichi qanday?
 A) 1,3 B) 1,13 C) 1,5 D) 1,8

22. Loshmida sonini belgilang.

- A) $2,3 \cdot 10^{25} \text{ m}^{-1}$ B) $2,7 \cdot 10^{25} \text{ m}^{-3}$
 C) $2,3 \cdot 10^{25} \text{ m}^{-3}$ D) $2,7 \cdot 10^{25} \text{ m}^{-1}$

23. Raketa yuqoriga $2g$ tezlanish bilan parvoz qilmoqda. Raketada osib qo'yilgan, uzunligi 0,3 m bo'lgan matematik mayatnikni tebranish davrini (ms) aniqlang. $g=10 \text{ m/s}^2$.
 A) 628 B) 314 C) 942 D) 157

24. Rasmda bir atomli ideal gaz 1 holatdan ikkinchi holatga o'tish jarayonida temperaturasini hajmga bog'lanishini grafigi tasvirlangan. Bu jarayonda gazning ichki energiyasi 45 kJ ga ortgan bo'lsa, gaz jami qancha issiqlik (kJ) qabul qilgan?



- A) 0 B) 90 C) 75 D) 45

25. Yorug'lik to'liqini uzunligi qanday elektromagnit to'liqlardan (m) iborat?
 A) $3 \cdot 10^{-5}$ - $8 \cdot 10^{-5}$
 B) $5 \cdot 10^{-8}$ - $7 \cdot 10^{-8}$
 C) $4 \cdot 10^{-7}$ - $7,6 \cdot 10^{-7}$
 D) $6 \cdot 10^{-6}$ - $9 \cdot 10^{-6}$

26. Radiuslari teng bo'lgan metall sharlarning biri dastlab $+q$ ikkinchisi $+2q$ elektr zaryadiga ega. Agar sharlar bir-biriga tekizilsa va dastlabki holatga qaytarilsa ularning ta'sirlashuv energiyasi qanday o'zgaradi?
 A) 12,5% ga ortadi B) 9% ga kamayadi
 C) o'zgarmaydi D) 18% ga ortadi

27. Tinch holatidan boshlab tekis tezlanuvchan harakat qilayotgan jismning 10- sekundda bosib o'tgan yo'li 5- sekundda bosib o'tgan yo'lidan necha marta farq qiladi?
 A) 19/9 B) 19/5 C) 19/7 D) 4

28. 25 kg toshko'mir batamom yonganda qancha issiqlik (J) ajralib chiqadi? $q=2,7 \cdot 10^7 \text{ J/kg}$
 A) $6,75 \cdot 10^8$ B) $6 \cdot 10^8$ C) $5 \cdot 10^8$ D) $6,5 \cdot 10^8$

29. Suv tubidan qalqib chiqayotgan pufakchanning hajmi suv sirtiga yaqinlashganda n marta ortgan bo'lsa, suvning chuqurligini aniqlash ifodasini ko'rsating. P_a - atmosfera bosimi, ρ_s - suv zichligi.

- A) $\frac{P_a g}{\rho_s (n-1)}$ B) $\frac{\rho_s (n-1)}{P_a g}$ C) $\frac{P_a (n-1)}{\rho_s g}$
 D) $\frac{P_a}{\rho_s (n-1) g}$

30. $+1$ elektron zaryadiga ega ${}^8_{17}\text{O}$ izotopi atomining elektron qobig'ida nechta elektron bo'ladi?
 A) 8 B) 17 C) 25 D) 7

31. Sterjen qanday tezlik bilan harakatlansa, uning uzunligi 2 marta kamayadi?

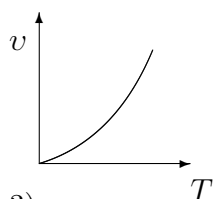
- A) $v = \frac{1}{2}c$
 B) $v = \frac{\sqrt{3}}{2}c$
 C) $v = \frac{\sqrt{2}}{2}c$
 D) $v = \frac{\sqrt{5}}{2}c$

32. Gorizontallik bilan unda yotgan 0,7 kg massali taxta orasidagi ishqalanish koeffitsienti 0,6 ga teng. Taxtaga 0,3 kg massali yuk qo'yilgan. Yuk va taxta orasidagi ishqalanish koeffitsienti 0,4 ga teng. Yuk sirpanib tushib qolishi uchun taxtani gorizontallik yo'nalishda eng kamida qanday doimiy kuch (N) bilan tortish kerak?

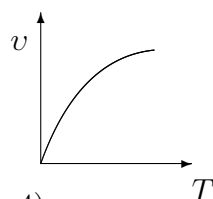
- A) 9,8 B) 4,9 C) 11 D) 19

33. Grafiklardan qaysi biri ideal gaz molekulari o'rtacha kvadratik tezligining temperatura bilan bog'lanishini to'g'ri tasvirlaydi?

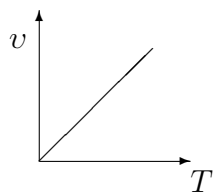
1)



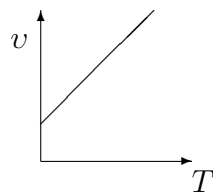
2)



3)



4)



- A) 4 B) 3 C) 2 D) 1

34. Tebranish konturida sig'imi 80 pF bo'lgan kondensator va induktivligi 20 μH g'altak bor. Konturning xususiy tebranishlari davri (μs) qanday?

- A) 0,25 B) 0,50 C) 0,45 D) 0,20

35. Botiq ko'zgi yordamida hosil qilingan tasvir predmetning o'zidan 2 marta katta, tasvir va predmet orasidagi masofa 18 sm, ko'zguning egrilik radiusini (sm) toping.

- A) 12 B) 0,24 C) 24 D) 8

36. Massalari m va $2m$ bo'lgan toshlar bir xil balandlikdan, bir vaqtda erkin tush boshladi. Qaysi toshning yerga urilish vaqtidagi tezligi katta bo'ladi?

- A) tezliklari teng B) ularning hajmiga bog'liq
C) birinchi toshning D) ikkinchi toshning

1. Choose the answer which correctly completes the sentence.

The last ice age ... have ended over 10,000 years ago, but from a historical point of view it was a relatively recent event.

- A) *could* B) *was to* C) *may* D) *should*

2. Choose the answer which correctly completes the sentence.

He hardly recognised Amanda! She ... blonde.

- A) *had her hair to dye* B) *dyled your hair*
C) *has had her hair dyed*
D) *had to dye her hair*

3. Change the sentence into the Passive Voice.

They didn't ask me my name.

- A) *I wasn't asked name.*
B) *I didn't ask my name.*
C) *I wasn't asked my name.*
D) *My name wasn't asked.*

4. Choose the answer which correctly completes the sentence.

When he lost his job, he stopped ... expensive clothes.

- A) *buy* B) *bought* C) *to buy* D) *buying*

5. Choose the answer which correctly complete the sentence.

The woman must have been very ... when she was young.

- A) *attraction* B) *attracted* C) *attract*
D) *attractive*

6. Choose the answer which correctly completes the sentence.

When Lyndon Johnson became president in 1963, he already ... in politics for 32 years.

- A) *has served* B) *served* C) *had served*
D) *was serving*

7. Choose the answer which correctly complete the sentence.

Our car stopped on the halfway to the city. We couldn't go ... because we had no petrol left.

- A) *further* B) *farthest* C) *farther* D) *far*

8. Choose the answer which correctly completes the sentence.

I parked my car ... the end of a short lane.

- A) *to* B) *at* C) *in* D) *for*

9. Choose the answer which correctly completes the sentence.
Alice is not very happy at her present job as a nurse. She wishes she ... to a nursing school.
A) *had gone* B) *hadn't gone* C) *went*
D) *didn't do*
10. Choose the answer which correctly complete the sentence.
You shouldn't get offended. You ... Nick. He didn't mean to hurt you.
A) *mustn't understand*
B) *must misunderstand*
C) *must have misunderstood*
D) *must be understanding*
11. Choose the answer which correctly complete the sentence.
It looks like rain. Have ... look at the sky.
A) *the* B) *-* C) *a* D) *an*
12. Choose the answer which correctly completes the sentence.
Gustav Eiffel designed the Eiffel Tower ... he was a bridge builder.
A) *then* B) *where* C) *what* D) *while*
13. Choose the answer which correctly completes the sentence.
Horror films are popular ... there is a lot of criticism of them.
A) *despite* B) *as if* C) *though* D) *so*
14. Choose the answer which correctly completes the sentence.
Did you tell him the news? He hadn't heard the news, ...?
A) *had he heard* B) *he had* C) *had he*
D) *hadn't he*
15. Choose the answer which correctly completes the sentence.
I'm finally used ... on an electric stove after having a gas one for a long time.
A) *to cook* B) *cooking* C) *to cooking*
D) *cooked*
16. Choose the answer which correctly completes the sentence.
They closed down the factory because it ... money for years.
A) *has lost* B) *lost* C) *had been losing*
D) *was losing*
17. Choose the answer which correctly completes the sentence.
Nora asked Bill: "Where did you hide my purse?"
Nora asked Bill where ... her purse.
A) *did he hide* B) *he had hidden* C) *he hid*
D) *he hide*
18. Choose the answer which correctly completes the sentence.
You should not say things that might make a highly ... person upset.
A) *sensibility* B) *sense* C) *sensitive*
D) *sensible*
19. Choose the answer which correctly completes the sentence.
It took me one and ... half hours to get there.
A) *an* B) *a* C) *the* D) *-*
20. Choose the answer which correctly completes the sentence.
There is the student ... book you found.
A) *which* B) *who* C) *whose* D) *whom*
21. Choose the answer which correctly completes the sentence.
He wanted to join the police force but they turned him ... because he was too short.
A) *down* B) *up* C) *away* D) *off*
22. Choose the answer which correctly completes the sentence.
Mary said she was worried that her son ... studying very well that year.
A) *was* B) *hasn't* C) *wasn't* D) *isn't*

23. Choose the answer which correctly completes the sentence.
A young woman walked into the office. She ... a baby.
A) *had carried* B) *carrying* C) *was carrying*
D) *carries*

Read the text. Then choose the correct answer to question 24-26.

One of the smallest of all mammals is the shrew, a mouse like creature with a head and body length of only 3.8 centimetres. All shrews are small, with dense, velvety fur, long tails, and tiny eyes and ears. Shrews have been called blood-thirsty, though the label is not entirely accurate because they must eat almost constantly to stay alive. The animal is believed to have a very high metabolic rate and cannot live more than a few hours without food. In the absence of normal prey, it will turn to cannibalism to survive. The shrew, or some closely related animal, can be found on every continent except Australia. Since this tiny animal has a reputation for having a very bad temper, the adjective "shrewish" is sometimes used to describe a certain type of women.

24. The passage tells us that the shrew ...
A) *is in the habit of eating every two hours.*
B) *is similar to a mouse in appearance*
C) *has a very short life span.*
D) *lives in dense forests.*
25. The passage states that shrews ...
A) *eat each other when they can't find any food.*
B) *are found in huge numbers in Australia.*
C) *are the smallest living mammals.*
D) *eat rarely but in large amounts at a time.*

26. From what is stated in the passage, we can infer that a shrewish woman is someone who ...
A) *easily gets annoyed.*
B) *is noticeably smaller than the average.*
C) *has tiny eyes and ears.*
D) *is very fond of velvet and fur.*

Read the text. Then choose the correct answer for the gaps 27-28 in the text.

Johannes Brahms is a German composer, pianist, and conductor. His works (27) ... four symphonies, songs and concertos for piano and for violin. He (28) ... and conducted his own works.

27.
A) *are included* B) *will include* C) *includes*
D) *include*
28.
A) *recognized* B) *performed* C) *attempted*
D) *designed*

Read the text. Then choose the correct answer for the gaps 29-31 in the text.

Consumers are creatures of habit: they buy the same products time and time again, and such is their (29)... with big brands, and the colours and logos that represent them, that they can register a brand they like with barely any conscious thought process. The packaging of consumer products (30)... therefore crucial vehicle for delivering the brand and the product (31)... our shopping baskets.

29.
A) *familiar* B) *familiarize* C) *familiarly*
D) *familiarity*
30.
A) *will be* B) *have been* C) *are* D) *is*

31. A) *of* B) *with* C) *towards* D) *into*

Read the text. Then choose the correct answer to questions 32-33.

Launched on October 4, 1957, Sputnik 1 was the first craft in orbit around the earth. Named from the Russian phrase for "traveling companion of the world" (Sputnik Zemli), it was a small satellite measuring only 58 cm across. It circled the earth once 96,2 minutes and transmitted information about the earth's atmosphere. After 57 days in space, it re-entered the atmosphere and was destroyed.

This historic launch began an era of intensive space programmes by both the Soviet Union and the United States. In the next three decades, hundreds of probes, satellites, and other missions were to follow Sputnik on the quest to explore both the wonders and the practical potential of space.

32. What is the main idea of the text?
- A) *The success of Sputnik 1 exploration.*
 B) *United States tried hard to launch their own satellite.*
 C) *Sputnik 1's crash on re-entry delayed other explorations.*
 D) *The main role of satellites is to send information from space.*

33. How long did Sputnik 1 stay in space?
 A) *58 minutes* B) *96,2 minutes* C) *4 days*
 D) *57 days*

Read the text. Then choose the correct answer to question 34-36.

Of the six outer planets, Mars, commonly called the Red Planet, is the closest to Earth. Mars, 4,200 miles in diameter and 55% of the size of Earth, is 34,600,000 miles from Earth, and 141,000,000 miles from the Sun. It takes this planet, along with its two moons, Phobos and Deimos, 1,88 years to circle the Sun, compared to 365 days for the Earth.

For many years, Mars had been thought of as the planet with the man-made canals, supposedly discovered by an Italian astronomer, Schiaparelli, in 1877. With the United States spacecraft Viking I's landing on Mars in 1976, the man-made canal theory was proven to be only a myth.

Viking I, after landing on the soil of Mars, performed many scientific experiments and took numerous pictures. The pictures showed that the red colour of the planet is due to the reddish, rocky Martian soil. No biological life was found, though it had been speculated by many scientists. The Viking also monitored many weather changes including violent dust storms. Some water vapour, polar ice and permafrost (frost below the surface) were found, indicating that at one time there were significant quantities of water on this distant planet. Evidence collected by the spacecraft shows some present volcanic action, though the volcanoes are believed to be dormant if not extinct.

34. Which of the following is not true?
 A) *Martian soil is rocky*
 B) *Mars is larger than Earth*
 C) *It takes longer for Mars to circle the Sun than it takes Earth*
 D) *Mars has two moons*
35. Man-made canals were supposedly discovered by ...
 A) *Phobos* B) *Schiaparelli* C) *Viking I*
 D) *Martian*
36. Mars has been nicknamed as ...
 A) *Viking I* B) *The Red Planet* C) *Deimos*
 D) *Martian*