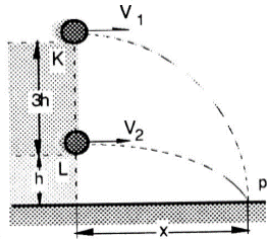


TestPro Fizika (@testfizika)

1. Rasmdagi ma'lumotlar-ga asoslangan holda ϑ_2/ϑ_1 qancha bo'lganda, jismlar bitta joyga tushadi?



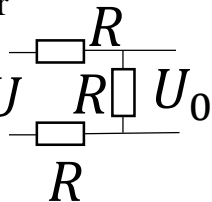
- A) 2 B) 1/2
C) 3 D) 4

2. Kattalashtirishi 8 ga teng okulyarli va fokus masofasi 2 m ga teng obyektivli teleskopning kattalashtirishini aniqlang?

- A) 36 B) 40 C) 57 D) 64

3. Yassi kondensator shisha bilan ajratilgan ikki qoplamadan iborat. Agar kondensator teshilishi oldidan elektr maydon kuchlan-ganligi $E = 30 \text{ MV/m}$ bo'lsa, bu paytda qoplamalar shishaga qanday P bosim ko'rsatadi (kPa)? A) 2 B) 3 C) 4 D) 5

4. Rasmda keltirilgan elektr zanjirida kirishdagi kuchla-nish U bo'lsa, chiqishdagi U_0 kuchlanish qanday?



- A) $\frac{U}{\sqrt{2}}$ B) $U/4$ C) $U/3$ D) $U/2$

5. Qattiq jism sirt qatlamidagi molekularga gaz molekularining tortilib ushlanib turishi deyiladi. Nuqtalar o'rniga to'g'ri jumlani qo'ying? @testfizika

- A) sublimatsiya B) adsorbsiya
C) dislokatsiya D) t.j.y

6. Texnetsiyni suniy usulda olishda qanday modda hosil bo'ladi?



A) elektron B) proton C) neytron D) foton

7. Neptun sayyorasi Quyoshdan Yerga nisba-tan 30 marta uzoqda. Neptunning Quyosh atrofida aylanish davri T (yillarda) aniqlansin?

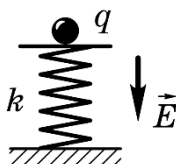
- A) 169 B) 164 C) 162 D) 160

8. Tokarlik stanokida diametri $d = 60 \text{ mm}$ bo'lgan val yo'nilmoqda. Keskichning bir aylanishidagi siljishi $h = 0,5 \text{ mm}$. Agar $\Delta t = 1 \text{ min}$ vaqt oralig'ida valning $l = 12 \text{ sm}$ uzunlikdagi qismi yo'nilsa, kesish tezligini toping (m/s)? ($\pi = 3$) @testfizika

- A) 0.76 B) 0.8 C) 0.72 D) 0.87

9. Vertikal pastga yo'nalgan elektr maydon kuchlan-ganligi $E = 1 \text{ MV/m}$ bo'lgan maydon-

da prujina ustiga $q = 10 \text{ nKl}$ zaryad rasmda ko'rsatilgandek joylashtirilgan. Agar prujina k $\Delta x = 3 \text{ mm}$ ga siqilgan bo'lsa, prujinada hosil bo'lgan elastiklik kuchini toping (mN)? Zarraning massasi nolga teng.



@testfizika

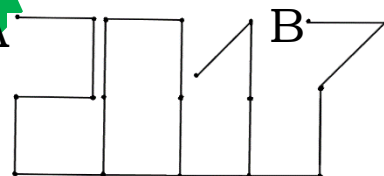
- A) 25 B) 10 C) 40 D) 50

10. Aerochananing havo vinti (parragi) $v = 360 \text{ min}^{-1}$ chastota bilan aylanmoqda. Aerochananing ilgariylanma harakat tezligi 54 km/soat ga teng. Agar vintning radiusi 1 m ga teng bo'lsa, vint uchlaridan biri qanday tezlik bilan harakatlanadi (m/s)? ($\pi^2 = 10$)

- A) 40,8 B) 50,6 C) 39,6 D) 43,7

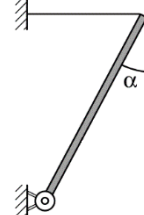
11. Rasmda ko'rsatilgan

A va B nuqtalar orasidagi qarshilik-ni toping? Har bir qismning qarshiligi R ga teng. @testfizika



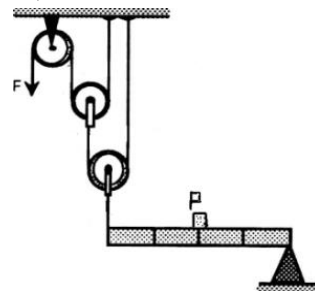
- A) $\frac{35}{6}R$ B) $2017R$ C) $10R$ D) $\frac{65}{6}R$

12. 20 kg massali sterjen rasmda ko'rsatilgandek ip bilan bog'langan. Ip uzulib ketmasligi uchun u qanday kuchga bardosh bera olishi kerak? ($\alpha = 60^\circ$)



- A) $T = 173 \text{ N}$ B) $T = 150 \text{ N}$
C) $T = 170 \text{ N}$ D) $T \geq 173 \text{ N}$

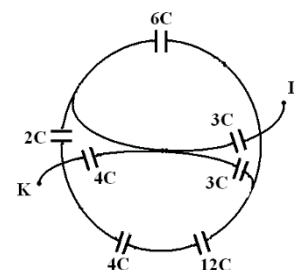
13. Sistema muvoza-natda bo'lsa, P/F ni toping? Balka va bloklar vaznsiz.



- A) 2 B) 4
C) 8 D) 16

@testfizika

14. K-L nuqtalar orasi-dagi umumiy sig'im qan-cha?



- A) 10C B) 7C
C) 6C D) 4C

15. Suv yuzida turgan rezina shar $65,2 \text{ m}$ suv ostiga tushurilganda uning radiusi necha marta o'zgaradi. Suv yuzidagi temperatura 27°C , suv ostida esa 9°C . Atmosfera bosimi 100 kPa .

A) 5 B) 4 C) 3 D) 2

16. Motosikl to'g'ri chiziq bo'ylab tinch holatdan harakatlana boshladi. Yo'ning birinchi kilometrini a_1 tezlanish bilan, ikkinchi kilometrini a_2 tezlanish bilan o'tdi. Birinchi kilometrda uning tezlanishi $\Delta\vartheta_1$ ga, ikkinchi kilometrda $\Delta\vartheta_2$ ga oshdi ($1 > \Delta\vartheta_2/\Delta\vartheta_1 > 0,5$). Tezlanishlarni taqqoslang.

A) $a_2/a_1 < 1$ B) $a_2/a_1 \leq 1$

C) $a_2/a_1 > 1$ D) $a_2/a_1 = 1$

17. Shisha plastinka ($n_1 = 1,65$) sirtiga $d = 110 \text{ nm}$ qalinlikdagi parda qoplangan ($n_2 = 1,55$). Qanday uzunlikdagi (nm) yorug'lik nurlari uchun ushbu parda nurni to'liq o'tkazuvchi bo'ladi? **@testfizika**

A) 110 B) 702 C) 341 D) 682

18. Nuqtaviy yorug'lik manbaidan 8 m va 24 m uzoqlikda ikkita sirt joylashgan bo'lib, birinchi sirtga yorug'lik nuri tik, ikkinchi sirtga 60° burchak ostida tushmoqda. Birinchi sirtning yoritilganligi 90 lx bo'lsa, ikkinchi sirtning yoritilganligini (lx) toping?

A) 30 B) 2,5 C) 5 D) 10

19. Suv to'ldirilgan og'zi berk idishning shiftiga massasi 5 kg bo'lgan sharcha ipga osib qo'yilgan. Idish gorizontaal yo'nalishda $a = 2,25 \text{ m/s}^2$ tezlanish bilan harakatga kelgan vaqtda ip ma'lum bir burchakka og'gan bo'lsa, ipda hosil bo'lgan taranglik kuchini toping? $\rho = 5000 \text{ kg/m}^3, g = 10 \text{ m/s}^2$.

A) 41,55 B) 41 C) 15,05 D) 56

20. Protonning spini nimaga teng?

A) $h/4\pi$ B) $h/2\pi$ C) $\hbar/2$ D) A va C

21. Yorug'lik nuri havo shisha ($n = 1,73$) chegarasiga tushmoqda, qaytgan nur to'la qutblangan bo'lishi uchun yorug'lik qanday burchak ostida tushishi kerak? **@testfizika**

A) 0° B) 30° C) 60° D) 90°

22. Yorug'lik nuri qanday qalinlikdagi (m) plastinkadan o'tganda uning intensivligi 7,4 marta kamayadi. Plastinka uchun nur yutish koeffitsienti $0,4 \frac{1}{m}$ ga teng.

A) 2 B) 3 C) 4 D) 5

23. Fotoeffekt birinchi bo'lib kim tomonidan kashf etilgan?

A) Eynshteyn B) Stoletov C) Gers D) Lenard

24. Yuzasi 10 sm^2 bo'lgan sirtga intensivligi $10^{18} \frac{1}{s}$ bo'lgan fotonlar dastasi tushadi. Tushayotgan yorug'likning to'lqin uzunligi $5 \cdot 10^{-7} \text{ m}$. Agar sirtning qaytarish koeffitsienti 0,7 ga teng bo'lsa, sirtga ko'rsatilayotgan yorug'lik bosimini toping (μPa)?

A) 2,25 B) 3,15 C) 1,4 D) 4

25. Yemirilish mahsuloti bilan muvozanatda bo'lgan 1 g radiy $^{226}_{88}\text{Ra}$ izotopi har sekundda $14,2 \cdot 10^{11} \text{ MeV}$ energiya ajratib chiqaradi. Shu radioaktiv yemirilish energiyasi hisobiga 10 g suvni (0°) qancha vaqtda qaynatish mumkin (soat)? **@testfizika**

A) 2 B) 3 C) 4 D) 5

26. Havo shisha sirtiga tushayotgan nurning tushish burchagi 2 marta ortsa nur sindirish ko'rsatgichi qanday o'zgaradi?

A) 2 marta ortadi B) o'zgarmaydi

C) 2 marta kamayadi D) 4 marta ortadi

27. Sinusoidal elektromagnit tebranishlar manbaidan 4 m masofadagi nuqtada E elektr maydon kuchlanganligi $t = T/6$ paytda yarim amplituda qiymatiga erishdi. Radioto'lqinning to'lqin uzunligini toping (m)?

A) 48 B) 54 C) 36 D) 24

28. Radiolokatoridan yuborilgan impulsning takrorlanish chastotasi 1500 Hz ga, bitta impulsning davomiyligi 1 mks ga teng. Lokatorning nishonni topishi mumkin bo'lgan eng kichik masofani aniqlang (km)?

A) 0,15 B) 0,3 C) 0,45 D) 0,6

29. Bir mol kislorod gazi isitgichdan Q_1 issiqlik olib, izobarik kengaymoqda, so'ngra sovutgichga Q_2 issiqlik berib, izoxorik ravishda dastlabki temperaturagacha sovutilmoqda.

Q_1/Q_2 nisbat topilsin?

A) 0,66 B) 1,67 C) 1 D) 1,4

30. Spin qanday birlikda o'lchanadi?

A) $J \cdot s^2$ B) $N \cdot m$ C) $J \cdot s$ D) birliksiz

Savollar kitobi nomeri: **tpf1 |**

Javoblaringizni **@fizrobot** ga yuboring!

Kanalimiz: **@testfizika**

Murojat uchun: **@testfizikabot**

HAMMAGA OMAD !!!