

OLIV TA'LIM MUASSASALARIGA KIRUVCHILAR UCHUN MENTAL
EDUCATION O'QUV MARKAZI TOMONIDAN TUZILGAN

REPITISION TEST TOPSHIRUVCHILAR UCHUN

SAVOLLAR KITOBI

ABITURIYENT: _____
F.I.O

IMZO

FANLAR:

Blok 1: Matematika (informatika bilan)

Blok 2: Fizika

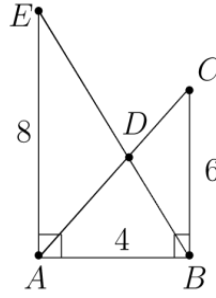
Blok 3: Ingliz tili

Savollar kitobi raqami: 2001901

MATEMATIKA (INFORMATIKA BILAN)

- Agar to'g'ri to'rtburchak kichik tomoni $a = 10\sqrt{2}$ bo'lsa, uning ixtiyoriy burchagidan katta tomonga o'tgan bissektrisasi uzunligi qancha?
A) 10 B) 20 C) 30 D) 15
- $y = \sqrt{25 - x^2}$ funksiyaning grafigi bo'lgan egri chiziq va $y = 0$ to'g'ri chiziq bilan chegaralangan shakl yuzini toping.
A) 25π B) 5π C) $12,5\pi$
D) aniqlab bo'lmaydi
- $$\begin{cases} 2x - 1 > x, \\ x^2 - 7x + 6 > 0, \\ 2^x < 128 \end{cases}$$
 tengsizliklar sistemasini yeching.
A) $(-\infty; 6)$ B) $(-\infty; 6) \cup (7; \infty)$
C) $(7; \infty)$ D) $(6; 7)$
- $\sqrt{x^2 + 11} - \sqrt{x^2 - 9} = 2$ tenglamani yeching. ($x \in R$)
A) -3 B) -5; 5 C) 5; 3 D) 3
- $|x| - |x - 2| = 2$ tenglamani yeching.
A) $\{-2\}$ B) $[2; \infty)$ C) $\{2\}$ D) $(2; \infty)$
- Kubning sirti 294 sm^2 ga teng. Uning barcha qirralari yig'indisini (sm) toping.
A) 98 B) 147 C) 84 D) 117
- $\int_0^2 (x^2 + 1) dx$ ni hisoblang.
A) $4\frac{4}{5}$ B) $4\frac{3}{4}$ C) $4\frac{2}{3}$ D) $4\frac{5}{6}$
- $y = \arcsin \frac{x-3}{2} - \lg(4-x)$ funksiyaning aniqlanish sohasini toping.
A) $[1; 5]$ B) $(1; 4)$ C) $[1; 4]$ D) $[1; 4)$
- $$\frac{\left(\frac{1}{a} + \frac{1}{b} - \frac{2c}{ab}\right)(a+b+2c)}{\frac{1}{a^2} + \frac{1}{b^2} + \frac{2}{ab} - \frac{4c^2}{a^2b^2}}$$
 ifodani soddalashtiring va uning son qiymatini toping.
 $a=7,4; b = \frac{5}{37}$.
A) $\frac{1}{2}$ B) 1 C) $\frac{4}{5}$ D) 0

- Rasmda berilgan ADE va BDC uchburchaklar yuzalarining ayirmasini toping.



- A) 4 B) 2 C) 5 D) 8
- Tekislikdan h uzoqlikda joylashgan nuqtadan tekislikka o'tkazilgan va tekislik bilan 30° li burchak hosil qiladigan og'maning uzunligini toping.
A) $\sqrt{3}h$ B) $1,5h$ C) $\sqrt{2}h$ D) $2h$
- Muntazam o'n burchakning har bir ichki burchagi necha gradusga teng?
A) 150° B) 144° C) 146° D) 135°
- Asosidagi burchaklari 60° va 30° bo'lgan trapetsiyaga radiusi $3\sqrt{3}$ bo'lgan doira ichki chizilgan. Trapetsiyaning perimetrini toping.
A) $3\sqrt{3}$ B) 8 C) $2\sqrt{2}$ D) $24(1+\sqrt{3})$
- $\arccos(1+x) + 2\arcsin x = 0$ tenglamani yeching.
A) -1 B) 0 C) $\frac{1}{3}$ D) $-\frac{1}{2}$
- $\sqrt{x^2 + 3x - 3} = 2x - 3$ tenglamani yeching.
A) -4 B) 5 C) 4 D) 3
- Dastlabki o'nta hadining yig'indisi 55 ga teng bo'lgan arifmetik progressiyaning o'ninchi hadi 19 ga teng bo'lsa, uning ayirmasini toping.
A) 2 B) 3 C) -2 D) -3
- Uchlari $A(-2; 3), B(-1; -2)$ va $C(1; 1)$ nuqtalarda bo'lgan uchburchakning A va C burchaklarini toping.
A) $90^\circ; 45^\circ$ B) $45^\circ; 90^\circ$ C) $30^\circ; 90^\circ$
D) $45^\circ; 45^\circ$
- Radiusi R ga teng bo'lgan doiraning markazidan bir tomonda ikkita bir-biriga parallel vatar o'tkazildi. Bunda ulardan biri 120° li, ikkinchisi 60° li yoylarni tortib tursa, vatarlar orasida joylashgan maydon yuzini toping.

- A) $\frac{\pi R^2}{6}$ B) $\frac{\pi R^2}{4}$ C) $\frac{5\pi R^2}{8}$ D) $\frac{\pi R^2}{3}$
19. $y = \ln ||x| + 1|$ funksiyaning aniqlanish sohasini toping.
 A) $(-\infty; 0)$ B) $(1; \infty)$
 C) $(-\infty; \infty)$ D) $(0; \infty)$
20. $\frac{\sqrt[4]{7\sqrt[3]{54} + 15\sqrt[3]{128}}}{\sqrt[3]{4\sqrt[4]{32} + \sqrt[3]{9\sqrt[4]{162}}}}$ ni hisoblang.
 A) $\frac{3}{5}$ B) $\frac{1}{4}$ C) 1 D) $\frac{2}{3}$
21. $y = \sqrt{\log_{0,2} \frac{x+2}{x-1}} - 1$ funksiyaning aniqlanish sohasini toping.
 A) $(-\infty; -2]$ B) $\left[-\frac{11}{4}; -2\right)$
 C) $[-2; 1)$ D) \emptyset
22. $f(x) = \cos 2x + e^x, f'(x) = ?$
 A) $-\sin 2x + e^x$ B) $-\sin x + e^x$
 C) $-2\sin 2x + e^x$ D) $\sin 2x + e^x$
23. Agar uch xonali sondan 6 ni ayirsak, ayirma 7 ga bo'linadi, 7 ni ayirsak, ayirma 8 ga bo'linadi, 8 ni ayirsak, ayirma 9 ga bo'linadi. Bu sonni toping.
 A) 936 B) 143 C) 503 D) 167
24. Rombning tomoni 4 ga, o'tkir burchagi 30° ga teng bo'lsa, unga ichki chizilgan aylananing uzunligini toping.
 A) 4π B) π C) 2π D) $\frac{\pi}{2}$
25. $2^{x+4} + 3 \cdot 2^{x-2} \geq 67$ tengsizlikni yeching.
 A) $[2; \infty)$ B) $[3; \infty)$
 C) $(-\infty; 2)$ D) $[4; \infty)$
26. Agar kitobdagi axborot hajmi 7 Kbayt bo'lsa, uni nechta "Axborot" so'zi bilan almashtirish mumkin?
 A) 1024 B) 2048 C) 2000 D) 14336
27. Hisoblang va o'tkazishni bajaring:
 $27_{10} + 111_2 \rightarrow x_2$
 A) 100010_2 B) 100011_2 C) 100110_2
 D) 100111_2

28. MS Excel 2003 da A1 dan A10 gacha bo'lgan katakchalardagi qiymatlarni yig'indisini hisoblash formulasini aniqlang.
 A) $CYMM(A1:A10)$ B) $=summa(A1:A10)$
 C) $A1+A10$ D) $=CYMM(A1:A10)$
29. Nuqtalar o'rniga kerakli iborani tanlang: Foydalanuvchi elektron pochta qutisini Internetga ulangan ... ocha oladi.
 A) faqat o'z kompyuterida
 B) faqat shu pochta ochilgan kompyuterda
 C) ixtiyoriy kompyuterda
 D) faqat server kompyuterda
30. Paskal dasturi lavhasidagi hisob natijasini aniqlang.
 begin a:=12; b:=14; c:=10; if(a>b) or (b>c) then y:=a+b-c else y:=a-b+c; writeln(y); end.
 A) 8 B) 6 C) 16 D) 14

FIZIKA

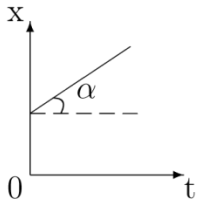
31. Agar qavariq linza yordamida buyumning mavhum tasviri hosil qilinayotgan bo'lsa, buyum qayerda joylashgan?
 A) linzaning fokusida
 B) ikkilangan fokus masofadan uzoqda
 C) fokus masofa bilan ikkilangan fokus masofa orasida
 D) fokus nuqta va optik markaz orasida
32. Qarshiligi 40Ω bo'lgan o'tkazgichdan 4 minut vaqt ichida 360 C zaryad o'tgan. O'tkazgich uchlaridagi kuchlanishni (V) toping.
 A) 40 B) 60 C) 86 D) 90
33. Yashil shisha orqali qizil harflarga qaralsa, ular qanday rangda ko'rinadi?
 A) qora B) qizil C) yashil D) jigarrang
34. Teplovoz 1 vagonga 6 m/s^2 , 2 vagonga 4 m/s^2 , 3 vagonga 2 m/s^2 tezlanish beradi. Bu uchala vagondan iborat sostavga teplovoz qanday tezlanish (m/s^2) beradi?
 A) $11/15$ B) $12/15$ C) $11/12$ D) $12/11$
35. Bir xil 5 nC dan elektr zaryadiga ega bo'lgan, radiuslari 2 sm va 6 sm ga teng bo'lgan metall sharlar bir-biriga tekizilsa va dastlabki holatga qaytarilsa ularning ta'sirlashuv energiyasi qanday o'zgaradi?

- A) o'zgarmaydi B) 25% kamayadi
C) 25% ortadi D) 32% ortadi

36. Gaz razryadi jarayonida qanday zarrachalar ishtirok etadi?

- A) elektronlar va kovaklar
B) faqat elektronlar
C) elektronlar, musbat va manfiy ionlar
D) faqat ionlar

37. Berilgan grafikdan foydalanib, $\alpha=23^\circ$ bo'lganda jism tezligini (m/s) toping. $\sin 23^\circ=0,39$; $\cos 23^\circ=0,92$



- A) 2,36 B) 0,4245 C) 0,92 D) 0,39

38. Suv tubidan qalqib chiqayotgan pufakchanning hajmi suv sirtiga yaqinlashganda n marta ortgan bo'lsa, suvning chuqurligini aniqlash ifodasini ko'rsating. P_a - atmosfera bosimi, ρ_s - suv zichligi.

- A) $\frac{P_a g}{\rho_s (n-1)}$ B) $\frac{P_a (n-1)}{\rho_s g}$ C) $\frac{P_a}{\rho_s (n-1) g}$
D) $\frac{\rho_s (n-1)}{P_a g}$

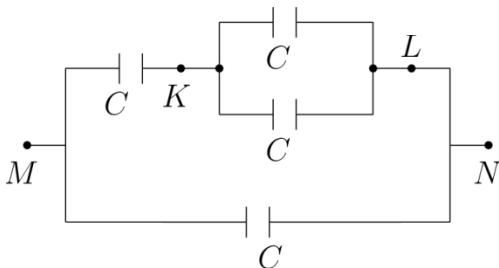
39. Gaz boshlang'ich 6 l hajmdan 4 l gacha izotermik siqilgan. Bunda uning bosimi $2 \cdot 10^5 \text{ N/m}^2$ ga ortgan. Gazning boshlang'ich bosimi (N/m^2) qanday?

- A) $4 \cdot 10^5$ B) $4 \cdot 10^6$ C) $20 \cdot 10^5$ D) $2 \cdot 10^5$

40. Temir bo'lagining suvdagi og'irligi 9,8 N, zichligi 7800 kg/m^3 bo'lsa, temir bo'lagining hajmini (sm^3) toping.

- A) 1,47 B) 147 C) 14,7 D) 125

41. Rasmdagi har bir kondensatorning sig'imi C ga teng. M va N nuqtalar orasidagi potentsiallar farqi 120 V bo'lsa, K va L nuqtalar orasidagi potentsiallar farqini (V) toping.



- A) 30 B) 40 C) 20 D) 60

42. Berilgan inersial sanoq sistemasida jism massasining uning harakat tezligiga bog'liqligi qanday ifodalanadi?

- A) $m = \rho V$ B) $\Delta m = \frac{\Delta E}{c^2}$
C) $m = \frac{m_0}{\sqrt{1 - \frac{v^2}{c^2}}}$ D) $m = \frac{2E_k}{v^2}$

43. Kislorod atomining massasi uning yadrosi massasidan necha marta katta?

- A) ≈ 1840 B) ≈ 1 C) $\approx 10^5$
D) $\approx 16 \cdot 1840$

44. Elektron vakuumda induksiyasi $5 \cdot 10^{-3} \text{ T}$ bo'lgan bir jinsli magnitoviy maydonda $10 \cdot 10^3 \text{ km/s}$ tezlik va induksiya chiziqlariga perpendikular yo'nalgan holda harakatlanmoqda. Elektroniga ta'sir etuvchi kuchni toping (N)?

- A) $5 \cdot 10^{-15}$ B) $8 \cdot 10^{-15}$ C) $4 \cdot 10^{-15}$
D) $2 \cdot 10^5$

45. Massalari 60 va 80 kg bo'lgan ikkita konki uchuvchi bir-birini 24 N kuch bilan itarsalar, ular qanday tezlanish (m/s^2) oladilar?

- A) 0,3 va 0,4 B) 0,4 va 0,3 C) 3 va 4
D) 4 va 3

46. 72 km/h tezlikda harakatlanayotgan poyezd dvigateli o'chirilsa, qancha masofa (m) yo'l o'tib to'xtaydi? Ishqalanish koeffitsienti $\mu=0,02$.

- A) 1000 B) 500 C) 720 D) 1440

47. Massasi 50 kg bo'lgan bola Oy sirtida turibdi deylik. U Oyga qanday kuch (N) bilan tortiladi? $g=1,6 \text{ m/s}^2$

- A) 16 B) 50 C) 80 D) 500

48. Metall sirtiga to'liq uzunligi $0,15 \mu\text{m}$ bo'lgan yorug'liq tushayapti. Agar fotoeffektning qizil chegarasi $0,2 \mu\text{m}$ bo'lsa foton energiyasining qancha qismi (%) kinetik energiyasiga aylanadi?

- A) 100 B) 40 C) 25 D) 50

49. 500 W quvvatli elektroplitka kuchlanish 127 V li sanoat tarmog'iga ($\nu=50 \text{ Hz}$) ulangan. Plitka zanjirida tok kuchining (A) vaqtga bog'lanish tenglamasini ko'rsating. Kuchlanish sinus qonuniga ko'ra o'zgaradi deb hisoblang.

- A) $I = 5,6\sin 100\pi t$ B) $I = 5,6\sin 50t$
 C) $I = 4\sin 100\pi t$ D) $I = 127\sin 100\pi t$
50. Izotermik kengayganda ideal gaz 20 J ish bajaradi. Gazga qancha issiqlik miqdori (J) berilgan?
 A) 50 B) *issiqlik miqdori berilmaydi* C) 30
 D) 20
51. O'zgarmas tok manbaiga avval 9Ω qarshilik so'ngra 4Ω qarshilik ulandi. Har ikkala holda birday vaqt ichida qarshiliklarda bir xil miqdorda issiqlik ajraladi. Manbaning ichki qarshiligini (Ω) aniqlang.
 A) 3 B) 36 C) 6 D) $\sqrt{6}$
52. 100 mol simob qancha hajmni (l) egallaydi?
 ($M = 200 \frac{g}{mol}$, $\rho = 13600 \frac{kg}{m^3}$)
 A) 2,23 B) 1,66 C) 1,47 D) 1,52
53. Chuqurligi 5 m bo'lgan ko'ldagi suvning bosimi necha (kPa) teng? Atmosfera bosimi $p_0 = 10^5$ Pa.
 A) 15 B) 150 C) 50 D) 5
54. Rasmda tasvirlangan har bir halqa qarshiligi R ga teng bo'lgan o'tkazgichdan tayyorlanib, ular rasmda ko'rsatilgandek ulansa A va B nuqtalar orasidagi umumiy qarshilik nimaga teng bo'ladi?
-
- A) $7R/2$ B) $1,5R$ C) $5R/2$ D) $0,75R$
55. Tovush chastotasining balandligi 80 Gs bo'lgan odam tovushining to'liq uzunligini (m) aniqlang. Tovush tezligi havoda 340 m/s.
 A) 160 B) 4,25 C) 5 D) 6,80
56. Osilgan prujinaga yuk 0,5 s davr bilan tebranmoqda. Agar yuk prujinadan olinsa, prujina qanchaga qisqaradi (sm)?
 A) 5,4 B) 2,0 C) 6,3 D) 39,7
57. Botiq ko'zgi yordamida hosil qilingan tasvir predmetning o'zidan 2 marta katta, tasvir va predmet orasidagi masofa 18 sm, ko'zguning egrilik radiusini (sm) toping.
 A) 0,24 B) 12 C) 8 D) 24

58. Quvvati 25 W va 100 W bo'lgan 2 ta lampochka 220 V kuchlanishda ishlashga muljallangan. Qaysi lampochkaning qarshiligi katta va necha marta?
 A) $R_2 = 2R_1$ B) $R_2 = 4R_1$ C) $R_1 = 4R_2$
 D) $R_1 = 2R_2$
59. Ideal gazning massasi o'zgarmagani holda uning hajmi 4 marta kamaytirilib, bosimi 7 marta orttirilsa, gazning ichki energiyasi necha marta ortadi?
 A) $4/11$ B) $4/7$ C) $7/4$ D) $11/4$
60. Ma'lum tezlik bilan harakatlanadigan jismning kinetik energiyasi 50 MJ, impulsi $10 \text{ kJ}\cdot\text{m/s}$ bo'lsa, massasini (kg) toping.
 A) 2 B) 1 C) 0,5 D) 1,5

INGLIZ TILI

61. Choose the answer which correctly completes the sentence.
 Our guests didn't leave until 2 a.m., so they ... have enjoyed themselves.
 A) *can't* B) *should* C) *must* D) *ought*
62. Choose the answer which correctly completes the sentence.
 He'll never forgive her for lying to him, ... he?
 A) *would* B) *won't* C) *wouldn't* D) *will*
63. Choose the answer which correctly complete the sentence.
 This soup is made from black beans. It is black ... soup.
 A) *bean's* B) *bean* C) *beans* D) *beans'*
64. Choose the answer which correctly completes the sentence.
 Alf ... as a waiter for ten years, then he opened his own company.
 A) *works* B) *has been working* C) *worked*
 D) *has worked*
65. Choose the answer which correctly completes the sentence.
 There are 9 planets in our solar system, and ... Pluto is the farthest.
 A) *the* B) *a* C) *an* D) -

66. Choose the answer which correctly completes the sentence.
He tried to phone his friend four days ago with no success. Since then he ... him five times.
A) *is phoning* B) *phoned* C) *has phoned*
D) *phone*
67. Choose the answer which correctly completes the sentence.
she was reading quietly in her room when suddenly the light ... out and she heard a scream.
A) *go* B) *went* C) *going* D) *had gone*
68. Choose the answer which correctly completes the sentence.
George's father gives him enough money to go to school, so he ... work.
A) *doesn't have to* B) *ought not to*
C) *didn't have to* D) *has to*
69. Choose the answer which correctly completes the sentence.
She went to the bank ... to get some money.
A) *unless* B) *in order* C) *in case*
D) *even though*
70. Choose the answer which correctly completes the sentence.
Nancy used ... a bike to work, but now she drives.
A) *ride* B) *to ride* C) *to be ridden*
D) *riding*
71. Choose the answer which correctly completes the sentence.
We saw beautiful mountains, fields and lakes on our trip. In ... words, we saw beautiful scenery.
A) *the other* B) *other* C) *others*
D) *another*
72. Choose the answer which correctly complete the sentence.
I wish I ... taller, because I am not very tall.
A) *would have been* B) *will be*
C) *would be* D) *were*
73. Choose the answer which correctly completes the sentence.
The older his granny gets, ... tolerant she becomes.
A) *the least* B) *least* C) *the little*
D) *the less*
74. Choose the answer which correctly completes the sentence.
He wanted to write to her but she ... give him her address.
A) *don't* B) *wouldn't* C) *hadn't*
D) *hasn't*
75. Choose the answer which correctly completes the sentence.
The receptionist put me ... to the manager's secretary.
A) *off* B) *forward* C) *with* D) *through*
76. Choose the answer which correctly complete the sentence.
He deserved to be given an ... for bravery.
A) *direction* B) *ticket* C) *mark* D) *award*
77. Choose the answer which correctly completes the sentence.
You'd better leave by the side door ... someone is watching us.
A) *so that* B) *in case* C) *in order that*
D) *unless*
78. Choose the answer which correctly completes the sentence.
We'd like to get our photo ... by a professional photographer.
A) *taken* B) *taking* C) *to take* D) *took*
79. Choose the answer which correctly complete the sentence.
No one was watching television, ... I switched it off.
A) *in case* B) *so that* C) *so as* D) *so*
80. Choose the answer which correctly completes the sentence.
The words "cloth" and "clothing" are related, the former meaning fabric or textile, and the ... meaning fabrics used to cover the body.
A) *latter* B) *latest* C) *later* D) *lately*

81. Choose the answer which correctly complete the sentence.

Everyone in the village participated . . . searching the lost child.

A) *with* B) *for* C) *in* D) *to*

Read the text. Then choose the correct answer to question 82-83.

Mountains have always evoked awe and inspired artists and adventurers throughout human existence. More recent research has led to important new insights into how mountains, the most magnificent of the Earth's formations, came to be the way they are. Mountains are created and shaped, it now appears, not only by the movements of the vast tectonic plates that make up the Earth's exterior but also by factors such as climate and erosion. In particular, the interactions between tectonic, climatic and erosional processes exert strong control over the shape and maximum height of the mountains as well as the amount of time necessary to build - or destroy - a mountain range. Paradoxically, the shaping of mountains seems to depend as much on the destructive forces of erosion as on the constructive power of tectonics.

82. As it is stated in the passage, recent research has . . .
- A) *confirmed what we already knew about mountain formations.*
 B) *enabled us to have better ideas about how mountains are shaped.*
 C) *demonstrated that tectonic plates move usually in one direction*
 D) *created more questions about the way mountains were formed.*
83. We can understand from the passage that the destructive forces of erosion and the constructive power of tectonics . . .
- A) *are not sufficient to build mountain ranges.*
 B) *can create mountain ranges with different climates.*
 C) *take an equal amount of time to build a mountain.*
 D) *both play an equal role in the formation of mountains.*

Read the text. Then choose the correct answer for the gaps 84-85 in the text.

Many famous people did not enjoy (84) . . . success in their early lives. Walt Disney, who was the creator of Mickey Mouse and the founder of his own movie production company, once was fired by a newspaper editor because he had (85) . . . good ideas.

84.

A) *imitate* B) *immediately* C) *immediate*
 D) *immediacy*

85.

A) *nothing* B) *no* C) *none* D) *any*

Read the text. Then choose the correct answer to questions 86-87.

The Yangtze river dolphin has been declared "functionally extinct". This means that although there may be some of them left, there aren't enough to repopulate the species. The reason behind this tragedy is a combination of water pollution and hydro-electric dam projects. Hydro-electric dams are harmful because they isolate groups of dolphins, creating smaller populations. This means that numbers are lower, and breeding is less likely.

Now there are fears for the future of another breed of dolphin, the Amazonian pink river dolphin. The Brazilian government are planning a hydro-electric plant in the middle of their habitat. Hunting also threatens the animals. They're still widespread compared to other species, but there is a sharp decline in numbers - roughly 10% per year. "The number is worrying", said Vera da Silva, a biologist at the National Institute of Amazonian Research.

86. What is the text about?

- A) *The danger of hunting for the Brazilian population.*
 B) *Hydro-electric dam projects on the Yangtze river.*
 C) *The breeding of small river dolphins.*
 D) *The danger of two breeds of dolphins disappearing.*

87. What does the number 10 in the text refer to?

- A) *The percentage of Amazonian dolphins which die out every year.*
- B) *The percentage of living Yangtze river dolphins.*
- C) *Governmental organizations which fight the pollution of rivers.*
- D) *Groups of biologist who are trying to repopulate dolphins.*

Read the text. Then choose the correct answer to question 88-90.

Of the six outer planets, Mars, commonly called the Red Planet, is the closest to Earth. Mars, 4,200 miles in diameter and 55% of the size of Earth, is 34,600,000 miles from Earth, and 141,000,000 miles from the Sun. It takes this planet, along with its two moons, Phobos and Deamos, 1,88 years to circle the Sun, compared to 365 days for the Earth.

For many years, Mars had been thought of as the planet with the man-made canals, supposedly discovered by an Italian astronomer, Schiaparelli, in 1877. With the United States spacecraft Viking I's landing on Mars in 1976, the man-made canal theory was proven to be only a myth.

Viking I, after landing on the soil of Mars, performed many scientific experiments and took numerous pictures. The pictures showed that the red colour of the planet is due to the reddish, rocky Martian soil. No biological life was found, though it had been speculated by many scientists. The Viking also monitored many weather changes including violent dust storms. Some water vapour, polar ice and permafrost (frost below the surface) were found, indicating that at one time there were significant quantities of water on this distant planet. Evidence collected by the spacecraft shows some present volcanic action, though the volcanoes are believed to be dormant if not extinct.

88. Which of the following is not true?

- A) *It takes longer for Mars to circle the Sun than it takes Earth*
- B) *Mars has two moons*
- C) *Mars is larger than Earth*
- D) *Martian soil is rocky*

89. Man-made canals were supposedly discovered by ...

- A) *Martian* B) *Schiaparelli* C) *Phobos*
- D) *Viking I*

90. Mars has been nicknamed as ...

- A) *Viking I* B) *Deimos* C) *The Red Planet*
- D) *Martian*

TO'G'RI JAVOBLAR

MATEMATIKA (INFORMATIKA BILAN)		FIZIKA		INGLIZ TILI	
1	B	31	D	61	C
2	C	32	B	62	D
3	D	33	A	63	B
4	B	34	D	64	C
5	B	35	B	65	D
6	C	36	C	66	C
7	C	37	B	67	B
8	D	38	B	68	A
9	B	39	A	69	B
10	A	40	B	70	B
11	D	41	B	71	B
12	B	42	C	72	D
13	D	43	B	73	D
14	B	44	B	74	B
15	C	45	B	75	D
16	B	46	A	76	D
17	B	47	C	77	B
18	A	48	C	78	A
19	C	49	A	79	D
20	A	50	D	80	A
21	B	51	C	81	C
22	C	52	C	82	B
23	C	53	B	83	D
24	C	54	D	84	C
25	A	55	B	85	B
26	A	56	C	86	@
27	A	57	D	87	A
28	D	58	C	88	C
29	C	59	C	89	B
30	C	60	B	90	C