

O‘ZBEKISTON RESPUBLIKASI VAZIRLAR MAHKAMASI
DAVLAT TEST MARKAZI

REPITISION TEST TOPSHIRUVCHILAR UCHUN

SAVOLLAR KITOBI

ABITURIYENT: _____ F.I.O. _____ Imzo _____

ABITURIYENT DIQQATIGA!

Test topshiriqlarini yechishdan avval savollar kitobini varaqlab, unda har bir fan bo‘yicha 36 ta savol mavjudligini tekshiring. Agar savollar soni kamligi aniqlansa yoki savollar savollar kitobi raqami bilan javoblar varag‘i raqami bir xil bo‘lmasa, darhol auditoriya rahbariga ma’lum qiling.

Savollar kitobida abituriyentning familiyasi, ismi, otasining ismi xato to‘ldirilgan yoki to‘ldirilmagan, va imzosi qo‘yilmagan hollarda e’tirozi ko‘rib chiqilmaydi.

Kitob tipi: **55 (636624)**

FANLAR:

Blok 1: Matematika (informatika bilan)

Blok 2: Fizika

Blok 3: Ingliz tili

Savollar kitobi raqami: **1000042**

Toshkent – 2014

MATEMATIKA (INFORMATIKA BILAN)

1. $7 \cdot 5^2$ va $3^2 \cdot 5 \cdot 7$ sonlari uchun EKUK ni toping.
A) 3150 B) 1500 C) 315 D) 1575
2. Oltiburchakli muntazam prizma eng katta diagonal kesimining yuzi Q , prizmaning qarama-qarshi yon yoqlari orasidagi masofa b bo'lsa, prizmaning hajmini hisoblang.
A) $\frac{3bQ}{4}$ B) $\frac{bQ}{2}$ C) $\frac{4bQ}{3}$ D) $\frac{3bQ}{2}$
3. $\log_2 3 + 2 \log_4 x = \sqrt[{\log_3 x}]{x^{\log_9 16}}$ tenglamani yeching.
A) $\log_3 4$ B) 16 C) 12 D) $\frac{16}{3}$
4. Ikkita doira radiuslari 1:2 nisbatda. Katta doira aylanasining uzunligi 8π . Kichik doira yuzini toping.
A) 4π B) π C) 8π D) 2π
5. Yon sirti 60π ga, balandligi 2 ga teng silindr asosining diametrini toping.
A) 15 B) 20 C) 30 D) 10
6. To'g'ri burchakli uchburchakning katetlaridan biri 15 sm ga, ikkinchi katetning gipotenuzadagi proyeksiyasi esa 16 sm ga teng. Bu uchburchakka ichki chizilgan aylananing radiusini (sm) toping.
A) 4 B) 5 C) 6 D) 3
7. $\sqrt{\frac{a^2}{3} + \sqrt{\frac{a^2}{3} + \sqrt{\frac{a^2}{3} + \dots}}} = 4$ tenglikni qanoatlantiruvchi a musbat sonni toping.
A) 6 B) 2 C) 8 D) 4
8. $P(x) = (x^2 - 3x + n)^3$ ko'phadning koeffitsientlar yig'indisi 64 ga teng bo'lsa, n ni toping.
A) 6 B) 8 C) 4 D) 2
9. Geometrik progressiyada $b_9 \cdot b_{19} = 9$ ga teng, $b_1 \cdot b_{27} + 1$ ni toping.
A) 5 B) 2 C) 4 D) 10
10. $f(x) = \frac{1}{\sin^2 x} + x^2$, $F(x) = ?$
A) $-ctgx + \frac{x^3}{3} + c$ B) $ctgx + 2x^2 + c$
C) $ctgx + \frac{2x^2}{3} + c$ D) $ctgx + 2x + c$
11. $\frac{18}{2 + \frac{x+7}{2 + \frac{x-3}{2}}} = 3$ tenglamani yeching.
A) 3 B) 4 C) 5 D) 1
12. $y = 1994x + 2013$ funksiya grafigi qaysi choraklardan o'tadi?
A) I, III, IV B) II, III, IV C) I, II, IV D) I, II, III
13. ABC uchburchakda BH -balandlik, CM -mediana, $MH=12$ bo'lsa, AB ni toping.
A) 12 B) 28 C) 20 D) 24
14. $\sqrt{x-3} - 2\sqrt{x-4} + \sqrt{x-4\sqrt{x-4}} = 1$ tenglamaning ildizlarini toping.
A) [6; 8] B) [6; 9] C) [5; 8] D) [3; 4]
15. Kesik konusning yon sirti 10π ga, to'la sirti 18π ga teng. Konusning to'la sirti unga ichki chizilgan shar sirtidan qanchaga ortiq?
A) 16π B) 15π C) 10π D) 14π
16. $y = \sqrt{25 - x^2}$ funksiyaning grafigi bo'lgan egri chiziq va $y = 0$ to'g'ri chiziq bilan chegaralangan shakl yuzini toping.
A) $12,5\pi$ B) 5π C) aniqlab bo'lmaydi D) 25π
17. $y = 2\cos^2 \frac{x}{2} - tgx \cdot ctgx$ funksiyaning qiymatlari to'plamini toping.
A) $(-1; 0) \cup (0; 1)$ B) $[0; 3]$ C) $[1; 3]$ D) $(1; 2) \cup (2; 3)$
18. Agar ABC o'tkirburchakli uchburchakda $AB=0,7$; $BC=0,9$; $\sin B=0,8$ bo'lsa, uchinchi tomonning kvadratini toping.
A) 0,544 B) 0,519 C) 0,541 D) 0,543
19. Yuzi 120 sm^2 , diagonali esa 17 sm bo'lgan to'g'ri to'rtburchakning tomonlarini (sm) toping.
A) 30; 4 B) 16; 12 C) 12; 10 D) 15; 8
20. $4tg^2 x + 2\frac{1}{\cos^2 x} - 80 = 0$ tenglamani yeching.
A) $\frac{\pi}{4} + \pi k, k \in Z$
B) $\pi(k+1), k \in Z$
C) $\pi k, k \in Z$
D) $\pm \frac{\pi}{3} + \pi k, k \in Z$

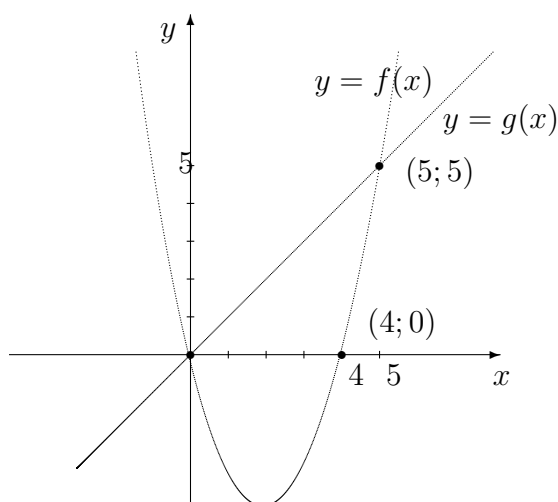
21.
$$\begin{cases} \frac{x+3}{3-x} < 2, \\ x^3 < 16x, \\ 4 \geq x^2 \end{cases}$$
 tengsizliklar sistemasini yeching.

- A) (4; 6] B) (3; 5) C) (0; 1) D) [2; 3]

22. $x^3 - x + 3 = 0$ bo'lsa, $(x^3 - x + 1) \cdot (x^3 + 3)$ ning qiymatini toping.

- A) $-2x$ B) $-4x$ C) $2x$ D) 0

23. Quyidagi chizmaga asoslanib $\frac{f(8)}{g(8)}$ ning qiymatini toping.



- A) -4 B) 4 C) 3 D) 2

24. $\frac{(x^2 + x + 1)x^2}{x^2 - 5x + 6} < 0$ tengsizlikni yeching.

- A) $(-\infty; 2] \cup [3; \infty)$
 B) (2; 3)
 C) $(-\infty; 2]$
 D) [2; 3]

25. $\frac{8-n}{2+\sqrt[3]{n}} : \left(2 + \frac{\sqrt[3]{n^2}}{2+\sqrt[3]{n}}\right) - \left(\sqrt[3]{n} + \frac{2\sqrt[3]{n}}{\sqrt[3]{n}-2}\right) \cdot \frac{4-\sqrt[3]{n^2}}{\sqrt[3]{n^2}+2\sqrt[3]{n}}$ ifodani soddalashtiring. ($n \neq \pm 8$)

- A) 0 B) $\frac{1}{n}$ C) 2 D) 1

26. Tekislikdan h uzoqlikda joylashgan nuqtadan tekislikka o'tkazilgan va tekislik bilan 30° li burchak hosil qiladigan og'maning uzunligini toping.

- A) $\sqrt{2}h$ B) $\sqrt{3}h$ C) $2h$ D) $1,5h$

27. Muntazam o'nburchakka tashqi chizilgan aylana radiusi $\frac{2}{\sin 18^\circ}$ ga teng bo'lsa, uning tomonini toping.

- A) 4 B) 6 C) 2 D) 3

28. $\vec{a}(3; 4)$ vektorga perpendikular bo'lgan birlik vektorni toping.

- A) $\left(\frac{3}{5}; \frac{4}{5}\right)$ va $\left(-\frac{3}{5}; -\frac{4}{5}\right)$
 B) $\left(\frac{4}{5}; \frac{3}{5}\right)$ va $\left(-\frac{4}{5}; -\frac{3}{5}\right)$
 C) $\left(\frac{3}{5}; -\frac{4}{5}\right)$ va $\left(-\frac{3}{5}; \frac{4}{5}\right)$
 D) $\left(\frac{4}{5}; -\frac{3}{5}\right)$ va $\left(-\frac{4}{5}; \frac{3}{5}\right)$

29. Basseyn ikkita quvur bilan 7,5 soatda to'ldiriladi. Birinchi quvurning yolg'iz o'zi basseynni ikkinchi quvurning yolg'iz o'zi to'ldirganidan 8 soat tezroq to'ldiradi. Birinchi quvurning alohida o'zi basseynni necha soatda to'ldira oladi?

- A) 12 B) 15 C) $15,5$ D) 16

30. $f(x) = \sin 2x + 4x$, $f'(x) = ?$

- A) $-\cos 2x + 4$ B) $2\cos 2x + 4$ C) $\cos x + 4$
 D) $\cos 2x + 4x$

31. Agar kitobdagi axborot hajmi 7 Kbayt bo'lsa, uni nechta "Axborot" so'zi bilan almashtirish mumkin?

- A) 1024 B) 2048 C) 2000 D) 14336

32. Sakkizlik sanoq sistemasidan ikkilik sanoq sistemasiga o'tkazishni bajaring: $567_8 \rightarrow x_2$

- A) 10110101_2 B) 101110111_2 C) 1111101_2
 D) 11101110_2

33. MS Word dasturi kompyuterda ishlayotgan bo'lsa, u holda ...

- A) MS Word dasturi boshqa kompyuterdan ko'chirib o'tkazilgan
 B) MS Office paketi installatsiya qilingan
 C) MS Office paketi deinstallatsiya qilingan
 D) MS Office paketi ko'chirib o'tkazilgan

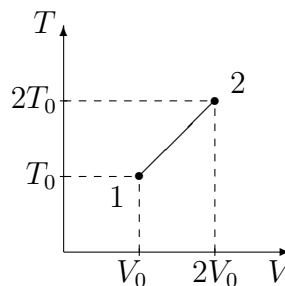
34. MS Word 2003 dasturida uskunalar panelini sozlash bo'limi qaysi menyuda joylashgan?

- A) Файл(Fayl) B) Правка(Tahrir)
 C) Вид(Ko'rinish) D) Формат(Format)

35. Nuqtalar o'rniga kerakli iborani tanlang:
Foydalanuvchi elektron pochta qutisini
Internetga ulangan ... ocha oladi.
A) faqat o'z kompyuterida
B) faqat shu pochta ochilgan kompyuterda
C) ixtiyoriy kompyuterda
D) faqat server kompyuterda
36. Paskal dasturi lavhasidagi hisob natijasini
aniqlang.
begin a:=12; b:=14; c:=10; if(a>b) or (b>c)
then y:=a+b-c else y:=a-b+c; writeln(y); end.
A) 8 B) 6 C) 16 D) 14

FIZIKA

1. 60 N kuch jismga $0,8 \text{ m/s}^2$ tezlanish beradi.
Qanday kuch (N) bu jismga $0,2 \text{ m/s}^2$ tezlanish
beradi?
A) 15 B) 20 C) 10 D) 30
2. Elektropoyezdning uchinchi vagoni oldida
turgan kuzatuvchi harakat boshlagan vagonning
5 s davomida o'tganini, poyezdning oxiri
o'tguncha esa 20 s vaqt o'tganini aniqlagan
bo'lsa, poyezdning vagonlari soni nechta?
(Poyezd harakati tekis tezlanuvchan.)
A) 15 B) 16 C) 14 D) 18
3. Malus qonuni ifodalovchi formulani ko'rsating.
A) $I = I_0 \cos \alpha$ B) $I = I_0 + I \cos \alpha$
C) $I = I_0 \cos^2 \alpha$ D) $I = I_0 \sin \alpha$
4. Balandligi 210 m bo'lgan sharsharadan
tushayotgan suvning pastdagi temperaturasi
sharshara boshidagi temperaturasidan qancha
($^{\circ}\text{C}$) ortiq? Suvning solishtirma issiqlik sig'imi
 $4200 \text{ J}/(\text{kg}\cdot\text{K})$. Mexanik energiya suvning isishi
uchun sarf bo'ladi.
A) 1,2 B) 0,5 C) 2 D) 1
5. Prujinaga mahkamlangan shar muvozanat
vaziyatidan chiqarib qo'yib yuborildi. Prujina
muvozanat vaziyatidan amplitudaning
yarmigacha (v_1) va to'rttdan bir qismigacha (v_2)
uzoqlashgan nuqtalardagi tezliklari nisbati
 v_1/v_2 ni toping. Tebranishlar kosinus qonuni
asosida ro'y bermoqda. $\sin 30^{\circ} = 1/2$;
 $\sin 82^{\circ} = 0,99$; $\sin 60^{\circ} = \sqrt{3}/2$; $\sin 75^{\circ} = 0,96$
A) 2 B) $\sqrt{5}/5$ C) $\sqrt{3}/2$ D) $2\sqrt{5}$
6. v va $2v$ tezlik bilan bir-birini quvib ketayotgan
ikkita bir xil sharcha absolyut noelastik
to'qnashdi. Ularning to'qnashuvdan keyingi
tezligini toping.
A) $v/2$ B) $2v$ C) $1,25v$ D) $1,5v$
7. O'zgarimas tok manbaiga avval 9Ω qarshilik
so'ngra 4Ω qarshilik ulandi. Har ikkala holda
birday vaqt ichida qarshiliklarda bir xil
miqdorda issiqlik ajraladi. Manbaning ichki
qarshiligini (Ω) aniqlang.
A) 6 B) 3 C) 36 D) $\sqrt{6}$
8. Ishlab chiqarilgan o'zgaruvchan elektr toki
kuchlanishining ta'sir qiymati 220 V ga teng
bo'lsa, uning maksimal qiymatini (V) toping.
A) 300 B) 330 C) 320 D) 310
9. Elektr sig'implari $C_1 = C_2 = C_3 = 10 \mu\text{F}$ dan
bo'lgan kondensatorlardan ikkitasi o'zaro
paralell, uchinchi esa ularga ketma-ket
ulangan kondensatorlar bateriyasi o'zgarimas
kuchlanish manбайдan zaryadlangan. Birinchi
kondensator olgan elektr zaryadi 5 nC ga teng
bo'lsa, uchinchi kondensatorning elektr
zaryadini (nC) toping.
A) 5 B) 7,5 C) 10 D) 15
10. Chuqurligi 5 m bo'lgan ko'ldagi suvning bosimi
necha (kPa) teng? Atmosfera bosimi $p_0 = 10^5 \text{ Pa}$.
A) 150 B) 50 C) 5 D) 15
11. Rasmda bir atomli ideal gaz 1 holatdan ikkinchi
holatga o'tish jarayonida temperaturasini
hajmga bog'lanishini grafigi tasvirlangan. Bu
jarayonda gazning ichki energiyasi 45 kJ ga
ortgan bo'lsa, gaz jami qancha issiqlik (kJ)
qabul qilgan?



- A) 90 B) 0 C) 45 D) 75
12. Elektr dvigatelga ulangan iste'molchidan 0,5 A
tok o'tmoqda, undagi kuchlanish 20 V. Dvigatel
1 soatda qancha ish (kJ) bajaradi?
Dvigatelning FIK 80% ga teng.
A) 28,8 B) 32,5 C) 30 D) 34

13. m massali zarraning kinetik energiyasi W bo'lsa, tezligi qanday?

A) $v = c\sqrt{1 - \left(\frac{mc^2}{mc^2+W}\right)^2}$

B) $v = c\sqrt{1 + \left(\frac{mc^2}{mc^2+W}\right)^2}$

C) $v = \sqrt{2W/m}$

D) $v = c^2p/W$

14. 108 km/soat tezlik bilan ketayotgan 1 t li avtomobilni to'xtatish uchun qancha ish (kJ) bajarish kerak?

A) -45 B) -445 C) -450 D) -455

15. Kuzatuvchidan 1060 m uzoqlikda temir yo'l relsiga bolg'a bilan urildi. Kuzatuvchi relsiga quloq tutib, tovushni havo orqali eshitgan vaqtidan 30 s oldin eshitgan bo'lsa, tovushning po'latdagi tarqalish tezligini (m/s) toping.

A) 2500 B) 500 C) 10000 D) 5000

16. To'liq uzunligi 6,6 nm bo'lganida fotoeffektni to'xtatuvchi potensial 100 V ga teng bo'lsa, u holda elektronning shu moddadan chiqish ishini (J) aniqlang. $h=6,62\cdot 10^{-34}$ J·s, $c=3\cdot 10^8$ m/s, $m_e = 9,1\cdot 10^{-31}$ kg

A) $1,4\cdot 10^{-17}$ B) $1,4\cdot 10^{-15}$ C) $1,4\cdot 10^{-16}$
D) $14\cdot 10^{-17}$

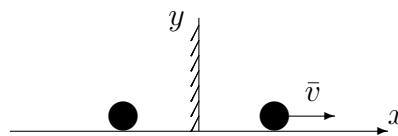
17. 100 m balandlikdan tushgan jism Yerga 40 m/s tezlik bilan tushdi. Agar jism massasi 2 kg bo'lsa havoning qarshilik kuchiga qarshi qanday ish (J) bajarilgan?

A) 200 B) 300 C) 450 D) 360

18. Tomonlarining uzunliklari bir xil bo'lgan to'g'ri to'rtburchak shaklidagi yassi g'altaklarning birinchisi 340 ta, ikkinchisi 100 ta o'ramga ega. Bir jinsli magnit maydonida ikkinchi g'altakka ta'sir etuvchi maksimal aylantiruvchi moment birinchi g'altakka nisbatan 2 marta katta. Agar ikkinchi g'altakdagi tok kuchi 170 mA ga teng bo'lsa, birinchi g'altakdagi tok kuchini toping (mA).

A) 85 B) 50 C) 25 D) 34

19. Sharcha yassi ko'zgu bilan bog'langan sistemada \vec{v} tezlik bilan kuzgudan uzoqlashmoqda. Sharcha tasvirini tezligi nimaga teng?



A) v B) $-v$ C) $-2v$ D) $2v$

20. Yukni qiyaligi 30° bo'lgan qiya tekislik bo'ylab 100 m masofaga tortib chiqarishda 20 kJ ish bajarilgan bo'lsa, qiya tekislikni FIKi (%) qanday?

A) 75 B) 50 C) 55 D) 25

21. Elementlari parallel ulangan zanjirning o'zgaruvchan tokka nisbatan qarshiligi $\left(\frac{1}{R^2} + \left(\omega C - \frac{1}{\omega L}\right)^2\right)^{-1/2}$ ga teng. Rezonans paytida bu qarshilik qanday bo'ladi?

A) 0

B) R

C) ∞

D) $\sqrt{R^2 + (\omega C + 1/\omega L)^2}$

22. Harorati 20°C va bosimi 100 kPa bo'lgan $1,45\text{ m}^3$ havo suyuq holatga keltirildi. Agar suyuq havoning zichligi 860 kg/m^3 bo'lsa, u qanday hajmni (l) egallaydi. Havoning molyar massasi 29 g/mol.

A) 2 B) 1,5 C) 4 D) 3

23. Harorati -73°C bo'lgan gaz molekullari ilgarilanma harakat kinetik energiyasini 3 marta ortirish uchun gazni qanday haroratgacha ($^\circ\text{C}$) qizdirish kerak?

A) 327 B) 600 C) 219 D) 200

24. 4 g vodoroddagi modda miqdorini (mol) toping.

A) 3 B) 4 C) 1 D) 2

25. Chang'ichi $0,2\text{ m/s}^2$ tezlanish bilan harakatlanib, uzunligi 50 m bo'lgan qiyalikni 10 s da o'tdi. Uning qiyalik boshidagi tezligi (m/s) qanday bo'lgan?

A) 4 B) 5 C) 3 D) 2

26. 0,5 g vodorod va 32 g kislorod aralashmasining bosimi 93 kPa, harorat esa 280 K bo'lgandagi zichligi (kg/m^3) toping. Vodorod va kislorodning molyar massasi mos ravishda 2 va 32 g/mol.
A) 0,5 B) 1,04 C) 2 D) 1,5
27. Radiopredatchik 30 m to'liq uzunlikda ishlaydi. Uning chastotasini (Hz) toping. $c=3 \cdot 10^8$ m/s
A) $10 \cdot 10^6$ B) 1000 C) $100 \cdot 10^6$ D) 10
28. Qiya tekislikda yukni balandlikka ko'tarish uchun 20 J ish bajarildi. Bunda FIK 80% bo'lganda foydali ishni (J) toping.
A) 15 B) 16 C) 18 D) 20
29. Uzunligi 500 km, ko'ndalang kesim yuzi 5 mm^2 bo'lgan aluminiy simdan 10 mA tok o'tayotgan bo'lsa, uning uchlaridagi kuchlanishni (V) toping. Aluminiyning solishtirma qarshiligi $2,8 \cdot 10^{-8} \Omega \cdot \text{m}$.
A) 14 B) 21 C) 25 D) 28
30. Uzunligi 3,5 m, diametri 30 sm bo'lgan g'ola suvda suzayapti. G'olaning ustida turgan odamning massasi (kg) maksimal qancha bo'lishi mumkin? G'olaning zichligi $0,7 \text{ g/sm}^3$.
A) 74 B) 35 C) 85 D) 69
31. Vakuumba elektr tokining qanday ta'sirlari namoyon bo'ladi?
A) barcha ta'sirlari B) kimyoviy C) issiqlik D) magnit
32. 100 V va 50 V kuchlanishgacha zaryadlangan $2 \mu\text{F}$ va $0,5 \mu\text{F}$ sig'imli kondensatorlarni bir xil ishorali qoplamalari bilan o'zaro ulanganda issiqlikka aylangan elektr energiyasi miqdorini (J) aniqlang.
A) $5 \cdot 10^{-4}$ B) $25 \cdot 10^{-4}$ C) $2,5 \cdot 10^{-4}$ D) $0,5 \cdot 10^{-4}$
33. Yerni radiusi 6380 km bo'lgan shar deb hisoblab, 1 kg massali jism vaznining jismni qutbdan ekvatorga ko'chirilgandagi o'zgarishini (N) aniqlang.
A) -0,034 B) -0,043 C) -0,26 D) 0,34
34. Qavariq sferik ko'zguning egrilik radiusi 1,6 m predmet tasviri o'zi turgan masofaga qaraganda 1,5 marta yaqin bo'lishi uchun uni ko'zgundan qanday masofada (?) joylashtirish kerak?
A) 0,4 B) 0,3 C) 0,5 D) 0,6

35. Kislorod atomining massasi uning yadrosi massasidan necha marta katta?
A) ≈ 1840 B) $\approx 16 \cdot 1840$ C) $\approx 10^5$ D) ≈ 1
36. Gaz razryadi jarayonida qanday zarrachalar ishtirok etadi?
A) elektronlar, musbat va manfiy ionlar
B) faqat ionlar
C) elektronlar va kovaklar
D) faqat elektronlar

INGLIZ TILI

1. Choose the answer which correctly completes the sentence.
Had she found the right buyer, she ... the house.
A) sold B) would have sold C) would sell D) will sell
2. Choose the answer which correctly completes the sentence.
The best time to go shopping is in the morning ... shops are not busy then.
A) that B) what C) when D) which
3. Choose the answer which correctly completes the sentence.
Once a busy city, Pompeii was destroyed by the eruption of ... Mount Vesuvius in 79 A.D.
A) - B) a C) the D) an
4. Choose the answer which correctly completes the sentence.
When did you ... the books back?
A) have to give B) had to give
C) must give D) can give
5. Choose the answer which correctly completes the sentence.
The Great Wall of China is ... structure that has ever been built.
A) the longest B) long C) longest D) longer
6. Choose the answer which correctly complete the sentence.
My feet are killing me. I ... to standing in queues for long periods of time.
A) am not used B) used not C) didn't use D) don't use

7. Choose the answer which correctly completes the sentence.
The class got ... when the professor entered.
A) *quietness* B) *quiet* C) *quietly*
D) *quieting*
8. Choose the answer which correctly complete the sentence.
I visited Brazil in April. I ... at a nice hotel for a fortnight.
A) *was staying* B) *had stayed*
C) *had been staying* D) *stayed*
9. Choose the answer which correctly completes the sentence.
He'll never forgive her for lying to him, ... he?
A) *wouldn't* B) *will* C) *won't* D) *would*
10. Choose the answer which correctly completes the sentence.
The historical places ... last year.
A) *are visited* B) *were visiting* C) *visit*
D) *were visited*
11. Choose the answer which correctly completes the sentence.
Scientists say that the satellite ... to Earth some time this afternoon.
A) *falls* B) *is going to fall* C) *would fall*
D) *had fallen*
12. Choose the answer which correctly complete the sentence.
We usually have ... breakfast at 8 o'clock.
A) *a* B) *-* C) *the* D) *an*
13. Choose the answer which correctly complete the sentence.
We have just heard on TV that, hurricane Jefferey ... hit the Caribbean, causing widespread damage in Puerto Rico.
A) *have* B) *has* C) *-* D) *was*
14. Choose the answer which correctly completes the sentence.
How can he phone her ... he remember her number?
A) *if* B) *despite* C) *in case* D) *unless*
15. Choose the answer which correctly completes the sentence.
The twins were difficult to tell apart, particularly when they wore very ... clothing.
A) *different* B) *the same* C) *alike*
D) *similar*
16. Choose the answer which correctly completes the sentence.
When she ran ... of tea, her neighbour gave her some.
A) *in* B) *up* C) *out* D) *by*
17. Choose the answer which correctly completes the sentence.
That film was released only two days ago, so you ... the film last week.
A) *couldn't have seen* B) *mustn't see*
C) *needn't see* D) *couldn't see*
18. Choose the answer which correctly completes the sentence.
Whose spectacles are these? - ... are on the table, and these are my spectacles.
A) *Their* B) *Yours* C) *Your* D) *Our*
19. Choose the answer which correctly completes the sentence.
Mary said she was worried that her son ... studying very well that year.
A) *hasn't* B) *was* C) *isn't* D) *wasn't*
20. Choose the answer which correctly complete the sentence.
I wish I ... taller, because I am not very tall.
A) *will be* B) *were* C) *would have been*
D) *would be*
21. Choose the answer which correctly complete the sentence.
We went home so that we could hear the news of Eurovision ... the radio.
A) *on* B) *in* C) *from* D) *for*
22. Choose the answer which correctly completes the sentence.
A telephone recorder tells callers what time ..., so you needn't go specially to find out the time.
A) *does the movie start* B) *start the movie*
C) *starts the movie* D) *the movie starts*

23. Choose the answer which correctly complete the sentence.

If you can't start the car, why don't you try ... it with all your force?

- A) *pushes* B) *pushing* C) *push*
D) *pushed*

Read the text. Then choose the correct answer to question 24-26.

Babies whose mothers smoke during pregnancy could be at higher risk of growing up to be criminals, new research suggests. This is the first study to examine the relationship between mothers who smoke and their children's adult behaviour. The findings were based on data for 4,169 males born in Copenhagen between September 1959 and December 1961. Their arrest records at age 34 were studied. It was discovered that the number of cigarettes their mothers had smoked during the last third of their pregnancy affected the men's arrests for both violent and non-violent crimes. This was true even when other possible causes, such as use of alcohol, divorce, income, and home environment had been taken into consideration.

24. The main idea of the passage is that ...

- A) *smoking during pregnancy increases the possibility of the child committing crimes in adult life.*
B) *4,169 males were born in Copenhagen between the years 1959 and 1961*
C) *most criminals are heavy smokers*
D) *pregnant women who smoke should be regarded as criminals and be punished.*

25. The research mentioned in the passage ...

- A) *studied only the last third of a mother's pregnancy.*
B) *mainly dealt with the adult behaviour of the children of smoking mothers.*
C) *concentrated on the effects of smoking before and after pregnancy.*
D) *was a repetition of several previous studies, which were inconclusive.*

26. From the passage, we can say that the researchers were careful because ...

- A) *they chose subjects who had only committed minor crimes.*
B) *all men born between September 1959 and December 1961 were studied.*
C) *they studied so many men from so many different countries.*
D) *other possible causes of crime were also considered.*

Read the text. Then choose the correct answer for the gaps 27-28 in the text.

Although they were described as the (27)... designs in many years, there isn't anything very new about the latest line of shoes from Santorelli. As one of the most famous designers in Italy, Salvatore Santorelli is expected to do more than simply repeat the previous year's (28)... formula of "smart, but casual" sandals in a range of pastels.

- 27.

- A) *first new Italian* B) *new first Italian*
C) *first Italian new* D) *Italian first new*

- 28.

- A) *success* B) *successful* C) *successfully*
D) *succession*

Read the text. Then choose the correct answer for the gaps 29-31 in the text.

Consumers are creatures of habit: they buy the same products time and time again, and such is their (29)... with big brands, and the colours and logos that represent them, that they can register a brand they like with barely any conscious thought process. The packaging of consumer products (30)... therefore crucial vehicle for delivering the brand and the product (31)... our shopping baskets.

- 29.

- A) *familiar* B) *familiarize* C) *familiarity*
D) *familiarly*

- 30.

- A) *are* B) *will be* C) *is* D) *have been*

31.

- A) *with* B) *into* C) *of* D) *towards*

Read the text. Then choose the correct answer to question 32-33

One chilly autumn morning in 1945, five thousand shoppers crowded the pavements outside Gimbels Department Store in New York City. The day before, Gimbels had taken out a full-page newspaper advertisement in the *New York Times*, announcing the sale of the first ballpoint pens in the United States. Within six hours, Gimbels had sold its entire stock of ten thousand ballpoints at \$12.50 each—approximately \$130 at today's prices.

In fact this “new” pen was not new after all, and was just the latest development in a long search for the best way to deliver ink to paper. In 1884 Lewis Waterman had patented the fountain pen, giving him the sole rights to manufacture it. This marked a significant leap forward in writing technology, but fountain pens soon became notorious for leaking. In 1888, a leather tanner named John Loud devised and patented the first “rolling-pointed marker pen” for marking leather. Loud's design contained a reservoir of ink in a cartridge and a rotating ball point that was constantly bathed on one side with ink.

Loud's pen was never manufactured, however, and over the next five decades, 350 additional patents were issued for similar ball-type pens, though none advanced beyond the design stage. Each had their own faults, but the major difficulty was the ink: if the ink was thin, the pens leaked, and if it was too thick, they clogged. Depending on the climate or air temperature, sometimes the pens would do both. Almost fifty years later, Ladislav and Georg Biro, two Hungarian brothers, **came up with** a solution to this problem. In 1935 Ladislav Biro was working as a journalist, editing a small newspaper. He became frustrated by the amount of time he wasted filling fountain pens with ink and cleaning up ink smudges. Ladislav and Georg set about making models of new pen designs and creating better inks to use in them. Ladislav observed the ink in newspaper printing dried rapidly, leaving the paper dry and smudge-free. He was determined to construct a pen using the same type of ink. However, the thicker ink would not flow from a regular pen nib so he had to develop a new type of point. Biro came up with the idea of fitting his

pen with a tiny ball bearing in its tip. As the pen moved along the paper, the ball bearing rotated and picked up ink from the ink cartridge which it delivered to the paper.

32. The problem with the ballpoint pens invented between 1888 and 1935 was that ...
- A) *they cost a great deal of money to manufacture*
 B) *the technology to manufacture them did not exist*
 C) *they could not write on ordinary paper*
 D) *they were affected by weather conditions*
33. What does “**came up with**” in bold mean?
- A) *to reject* B) *to suggest* C) *to get rid of*
 D) *to move towards*

Read the text. Then choose the correct answer to question 34-36.

Of the six outer planets, Mars, commonly called the Red Planet, is the closest to Earth. Mars, 4,200 miles in diameter and 55% of the size of Earth, is 34,600,000 miles from Earth, and 141,000,000 miles from the Sun. It takes this planet, along with its two moons, Phobos and Deimos, 1,88 years to circle the Sun, compared to 365 days for the Earth.

For many years, Mars had been thought of as the planet with the man-made canals, supposedly discovered by an Italian astronomer, Schiaparelli, in 1877. With the United States spacecraft Viking I's landing on Mars in 1976, the man-made canal theory was proven to be only a myth.

Viking I, after landing on the soil of Mars, performed many scientific experiments and took numerous pictures. The pictures showed that the red colour of the planet is due to the reddish, rocky Martian soil. No biological life was found, though it had been speculated by many scientists. The Viking also monitored many weather changes including violent dust storms. Some water vapour, polar ice and permafrost (frost below the surface) were found, indicating that at one time there were significant quantities of water on this distant planet. Evidence collected by the spacecraft shows some present volcanic action, though the volcanoes are believed to be dormant if not extinct.

34. Which of the following is not true?
- A) *Mars is larger than Earth*
 - B) *Mars has two moons*
 - C) *Martian soil is rocky*
 - D) *It takes longer for Mars to circle the Sun than it takes Earth*
35. Man-made canals were supposedly discovered by ...
- A) *Viking I*
 - B) *Phobos*
 - C) *Martian*
 - D) *Schiaparelli*
36. Mars has been nicknamed as ...
- A) *Viking I*
 - B) *The Red Planet*
 - C) *Martian*
 - D) *Deimos*