

O‘ZBEKISTON RESPUBLIKASI VAZIRLAR MAHKAMASI
DAVLAT TEST MARKAZI

REPITISION TEST TOPSHIRUVCHILAR UCHUN

SAVOLLAR KITOBI

ABITURIYENT: _____ F.I.O. _____ Imzo _____

ABITURIYENT DIQQATIGA!

Test topshiriqlarini yechishdan avval savollar kitobini varaqlab, unda har bir fan bo‘yicha 36 ta savol mavjudligini tekshiring. Agar savollar soni kamligi aniqlansa yoki savollar savollar kitobi raqami bilan javoblar varag‘i raqami bir xil bo‘lmasa, darhol auditoriya rahbariga ma’lum qiling.

Savollar kitobida abituriyentning familiyasi, ismi, otasining ismi xato to‘ldirilgan yoki to‘ldirilmagan, va imzosi qo‘yilmagan hollarda e’tirozi ko‘rib chiqilmaydi.

Kitob tipi: **55 (636624)**

FANLAR:

Blok 1: Matematika (informatika bilan)

Blok 2: Fizika

Blok 3: Ingliz tili

Savollar kitobi raqami: **1000032**

Toshkent – 2014

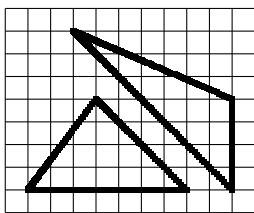
MATEMATIKA (INFORMATIKA BILAN)

- $\frac{x^{\frac{1}{2}} + 1}{x + x^{\frac{1}{2}} + 1} : \frac{1}{x^{1,5} - 1}$ ifodani soddalashtiring.
A) $x + 1$ B) 1 C) $x - 1$ D) $1 - x$
- $\frac{(2p - q)^2 + 2q^2 - 3pq}{2p^{-1} + q^2} : \frac{4p^2 - 3pq}{2 + pq^2}$ ifodani soddalashtiring va uning son qiymatini toping.
 $p=0,78, q=7/25$
A) $0,25$ B) 1 C) -1 D) $0,5$
- Radiusi R ga teng bo'lgan doiraning markazidan bir tomonda ikkita bir-biriga parallel vatar o'tkazildi. Bunda ulardan biri 120° li, ikkinchisi 60° li yoylarni tortib tursa, vatarlar orasida joylashgan maydon yuzini toping.
A) $\frac{5\pi R^2}{8}$ B) $\frac{\pi R^2}{3}$ C) $\frac{\pi R^2}{6}$ D) $\frac{\pi R^2}{4}$
- Agar to'g'ri to'rtburchak kichik tomoni $a = 10\sqrt{2}$ bo'lsa, uning ixtiyoriy burchagidan katta tomonga o'tgan bissektrisasi uzunligi qancha?
A) 20 B) 15 C) 30 D) 10
- Talaba besh yilda 31 ta imtihon topshirdi. U har keyingi yilda oldingi yildagiga qaraganda ko'p imtihon topshirgan. Beshinchi kursda birinchi kursdagidan 3 marta ko'p imtihon topshirgan bo'lsa, to'rtinchi kursda nechta imtihon topshirgan?
A) 6 B) 7 C) 8 D) 9
- Asosining tomonlari $12; 9$ va 15 hamda asosidagi barcha ikki yoqli burchaklari 60° dan iborat bo'lgan uchburchakli piramidaning hajmini toping.
A) $54\sqrt{3}$ B) $27\sqrt{3}$ C) $162\sqrt{3}$ D) $108\sqrt{3}$
- $\left(\frac{1}{8} \cdot 4^x\right)^x - \frac{8^x}{16} = 0$ tenglama ildizlarining o'rtta arifmetigini toping.
A) $1,5$ B) 3 C) $2,5$ D) 2

- x, y, z - butun sonlar bo'lib, $\begin{cases} \frac{xy}{y-x} = -\frac{15}{2} \\ \frac{yz}{z-y} = \frac{21}{4} \\ \frac{xz}{z-x} = \frac{35}{2} \end{cases}$ bo'lsa, $x + y - z = ?$
A) 4 B) 15 C) 9 D) 1

- $\frac{bc - a^2}{ab} - \frac{b^2 - ac}{bc} + \frac{ab - c^2}{ac}$ ifodani kasrga aylantiring.
A) $\frac{a^2 - b^2 - c^2}{abc}$ B) abc C) -1 D) 0
- $\frac{2^{19} \cdot 27^3 + 15 \cdot 4^9 \cdot 9^4}{6^9 \cdot 2^{10} + 12^{10}}$ ni hisoblang.
A) 2 B) $\frac{1}{3}$ C) $\frac{1}{2}$ D) 1
- Ishorasi almashinuvchi geometrik progressiyaning birinchi hadi -2 ga, uchinchi hadi -8 ga teng bo'lsa, shu progressiyaning dastlabki 6 ta hadi yig'indisini toping.
A) 36 B) -42 C) -36 D) 42
- To'g'ri to'rtburchakning bo'yi kvadratning tomonidan 8 m uzun, eni esa shu kvadrat tomonidan 4 m qisqa. Kvadrat tomonini x bilan belgilab, to'g'ri to'rtburchak perimetri va yuzi uchun ifoda tuzing.
A) $P = 4x + 2; S = (x + 8)(x - 4)$
B) $P = 4x + 4; S = x^2 + 4x - 18$
C) $P = 4x + 8; S = 4(x + 8)$
D) $P = 4(x + 2); S = (x + 8)(x - 4)$
- $16^5 + 2^{15}$ yig'indi berilgan sonlardan qaysi biriga qoldiqsiz bo'linadi?
A) 9 B) 33 C) 29 D) 17
- $\log_{x-1}(x + 1) > 2$ tengsizlikni yeching.
A) $(2; 3)$
B) $(2; 3) \cup (3; \infty)$
C) $(-\infty; 0) \cup (3; \infty)$
D) $(0; 1) \cup (2; 3)$
- Radiusi r bo'lgan aylananing vatari aylana markazidan $\frac{r\sqrt{3}}{2}$ uzoqlikda bo'lsa, bu vatar tortib turgan yoy uzunligini toping.
A) $\frac{\pi r}{2}$ B) $\frac{\pi r}{6}$ C) $\frac{\pi r}{4}$ D) $\frac{\pi r}{3}$
- $\left| \frac{2x^5}{x^4 - 16} \right| = \frac{2x^5}{16 - x^4}$ tenglamaning barcha natural yechimlari yig'indisidan eng katta manfiy butun yechimi ayirmasini toping.
A) 3 B) 4 C) 1 D) 2

17. Rasmda qanday uchburchaklar tasvirlangan?



- A) yuzalari har xil
 B) tengdosh
 C) perimetrlari bir xil
 D) uchburchaklardan biri to'g'ri burchakli
18. $\sqrt{x^2 + 2x + 1} - |x - 4| = 2$ tenglamaning $[1; 3]$ kesmadagi ildizini toping.
 A) bu oraliqda yechimi yo'q B) 2,(3) C) 1,5
 D) 2,5
19. Muntazam o'nikkiburchakka tashqi chizilgan aylana radiusi $\sqrt{2 + \sqrt{3}}$ ga teng bo'lsa, uning tomonini toping.
 A) 2 B) $\sqrt{3}$ C) 1 D) $\sqrt{2 + \sqrt{3}}$
20. To'g'ri burchakli trapetsiyaga radiusi 5 ga teng aylana ichki chizilgan. Agar trapetsiyaning katta asosi 17 ga teng bo'lsa, aylana markazidan trapetsiyaning o'tkir burchagigacha bo'lgan masofani toping.
 A) 9 B) 13 C) 12 D) 7
21. $\sqrt{x^2 + 3x - 3} = 2x - 3$ tenglamani yeching.
 A) 4 B) 5 C) 3 D) -4
22. $f(x) = \sqrt{2}\sin x - 2x$, $f'(x) = ?$
 A) $\sqrt{2}\cos x - 2$ B) $-\cos x - 2$
 C) $-\sqrt{2}\cos^2 x - 2$ D) $\cos x + 2$
23. Agar $|\vec{AB}| = |\vec{AC}| = |\vec{AB} + \vec{AC}| = 4$ bo'lsa, $|\vec{CB}|$ ning qiymatini toping.
 A) $4\sqrt{2}$ B) $4\sqrt{3}$ C) $2\sqrt{3}$ D) 4,5
24. Agar arifmetik progressiyada $a_1 + a_2 + a_3 = 15$ va $a_1 a_2 a_3 = 80$ bo'lsa, uning ayirmasini toping.
 A) 4 B) 5 C) 2 D) ± 3
25. $y = \log_{0,5} x$ funksiyaga teskari funksiyani toping.
 A) $x = \log_2 y$ B) $x = \log_{0,5} y$ C) $y = (0,5)^x$
 D) $x = (0,5)^y$

26.
$$\begin{cases} \sin(x - y) = 2 \sin x \sin y, \\ x + y = \frac{\pi}{2} \end{cases}$$
 sistemani yeching.

- A) $\left(-\frac{\pi}{8} + \pi k; \frac{5\pi}{8} - \pi k\right)$, $k \in Z$
 B) $\left(\frac{\pi}{8} + \frac{\pi k}{2}; \frac{5\pi}{8} + \frac{\pi k}{2}\right)$, $k \in Z$
 C) $\left(-\frac{\pi}{8} + \frac{\pi k}{2}; \frac{5\pi}{8} - \frac{\pi k}{2}\right)$, $k \in Z$
 D) $\left(\frac{\pi}{8} + \pi k; \frac{5\pi}{8} + \pi k\right)$, $k \in Z$
27. Agar $xy + yz + zx = 16$ bo'lsa, $x^2 + y^2 + z^2$ ifoda teng bo'lishi mumkin bo'lgan eng kichik qiymatni toping.
 A) 48 B) 16 C) 32 D) 8
28. Zavodning 3 ta sexida 2740 nafar ishchi ishlaydi. Ikkinchi sexda birinchisiga nisbatan 140 ta ko'p ishchi, uchinchi sexda esa ikkinchisiga nisbatan 1,2 marta ko'p ishchi ishlaydi. Har bir sexda qanchadan ishchi ishlaydi?
 A) 760; 900; 1080 B) 790; 900; 1050
 C) 750; 900; 1090 D) 760; 980; 1000
29. Shar sirtining unga ichki chizilgan kub sirtiga nisbatini toping.
 A) $\frac{3\pi}{2}$ B) $\frac{\pi}{6}$ C) $\frac{\pi}{2}$ D) $\frac{\pi}{4}$
30. $\int_0^{\frac{\pi}{12}} \cos 2x dx$ ni hisoblang.
 A) $\frac{3}{4}$ B) $\frac{1}{3}$ C) $\frac{1}{2}$ D) $\frac{1}{4}$
31. Dastur asosida boshqariladigan birinchi hisoblash mashinasini kim va qachon ixtiro qilgan?
 A) 1930 yil, V.Bush B) 1941 yil, K.Suze
 C) 1944 yil, G.Eyken D) 1907 yil, Li de Fores
32. Tashkil etuvchi barcha sodda mulohazalar rost bo'lganda quyidagilardan qaysi birining natijasi rost bo'ladi?
 A) $(A \vee \neg B) \wedge \neg(C \vee D)$
 B) $A \wedge \neg B \vee C \wedge \neg D$
 C) $A \vee B \wedge \neg C \vee \neg D$
 D) $\neg A \vee (B \vee C) \wedge \neg D$

33. Nomi S harfidan boshlanuvchi va faqat to'rtta belgidan iborat ixtiyoriy kengaytmali fayllar qanday belgilanadi?
A) S* * *.* B) S???.* C) S???.* D) S*.*
34. MS Word 2003 dasturida uskunalar panelini sozlash bo'limi qaysi menyuda joylashgan?
A) Файл(Fayl) B) Правка(Tahrir)
C) Вид(Ko'rinish) D) Формат(Format)
35. Nuqtalar o'rniga kerakli iborani tanlang: Foydalanuvchi elektron pochta qutisini Internetga ulangan ... ocha oladi.
A) faqat o'z kompyuterida
B) faqat shu pochta ochilgan kompyuterda
C) ixtiyoriy kompyuterda
D) faqat server kompyuterda
36. Dastur lavhasida X qaysi qiymatni qabul qiladi? VAR i,j,X: intejer;
BEGIN FOR i:=1 TO 2 DO;
FOR j:=2 DOWNTO 1 DO X:=i+j; END.
A) 3 B) 7 C) 4 D) 10

FIZIKA

1. Tezligi $1,9 \cdot 10^7$ m/s bo'lgan α -zarra oltin atomi yadrosi yo'nalishida harakatlanib, yadroga qanday eng kichik masofagacha (m) yaqinlashishi mumkin? α -zarraning massasi $6,6 \cdot 10^{-27}$ kg, zaryadi $1,3 \cdot 10^{-17}$ Kl.
A) $3,1 \cdot 10^{-14}$ B) $4,9 \cdot 10^{-14}$ C) $4 \cdot 10^{-14}$
D) $3,8 \cdot 10^{-14}$
2. Uzoq masofaga uchayotgan kosmik kemanding tezligi harakat boshidan 1 soat o'tgach 1000 km/s ga yetdi. Kemanding tezlanishini (m/s^2) toping.
A) 100 B) 1000 C) 278 D) 0,278
3. Yorug'lik suvda qanday tezlik (m/s) bilan tarqaladi? $n_{suv}=1,33$
A) 00000 B) $2,25 \cdot 10^8$ C) $3 \cdot 10^8$
D) $2,20 \cdot 10^8$
4. Tebranish konturida sig'imi 80 pF bo'lgan kondensator va induktivligi 20 μ H g'altak bor. Konturning xususiy tebranishlari davri (μ s) qanday?
A) 0,45 B) 0,25 C) 0,50 D) 0,20

5. Garmonik tebranishlarining amplitudasi 5 sm, boshlang'ich fazasi $\frac{3\pi}{2}$ ga teng. Tebranishlar soni minutiga 120 marta tebranadi. Garmonik tebranishlarning tenglamasini ko'rsating.

A) $x = 5 \cos \left(2\pi t + \frac{3\pi}{2} \right)$

B) $x = 0,05 \sin 4\pi t$

C) $x = 0,05 \cos \left(4\pi t + \frac{3\pi}{2} \right)$

D) $x = 5 \sin \left(4\pi t + \frac{\pi}{2} \right)$

6. Temperaturaning pastki chegarasi absolut shkala bo'yicha nimaga teng (K)?
A) 0 B) -273 C) 273 D) -100

7. Ko'z akkomodatsiyasi nima?

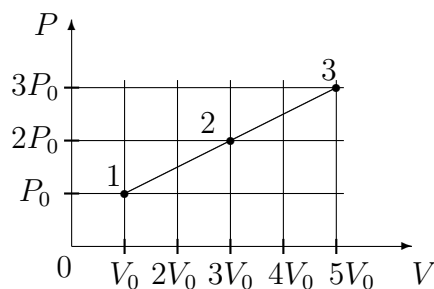
A) ko'z gavharining fokus masofasini kuzatilayotgan buyumgacha bo'lgan masofaga moslash qobiliyati

B) uzoqdan ko'rarlik

C) ko'rish burchagi

D) yaqindan ko'rarlik

8. Rasmda bir atomli bir mol ideal gaz ustida amalga oshgan jarayon tasvirlangan. Temperaturalar nisbati T_2/T_1 ni aniqlang.



- A) 15 B) 6 C) 5 D) 3

9. Balandligi 210 m bo'lgan sharsharadan tushayotgan suvning pastdagi temperaturasi sharshara boshidagi temperaturasidan qancha ($^{\circ}$ C) ortiq? Suvning solishtirma issiqlik sig'imi 4200 J/(kg·K). Mexanik energiya suvning isishi uchun sarf bo'ladi.
A) 1,2 B) 0,5 C) 2 D) 1

10. Qarshiliklari $5\text{ k}\Omega$, $20\text{ k}\Omega$ va $4\text{ k}\Omega$ ga teng bo'lgan rezistorlar o'zaro parallel ulanib, so'ngra elektr tarmog'iga ulandi. Agar ikkinchi rezistordagi tok kuchi 4 mA ga teng bo'lgan bo'lsa, tarmoqdagi tok kuchini (mA) toping.
A) 24 B) 36 C) 12 D) 40
11. Yerdan Oygacha bo'lgan masofa 384 ming km bo'lsa, Oydan yorug'lik nuri qancha vaqtda (s) yetib keladi?
A) 1,4 B) 1,5 C) 1,3 D) 1,2
12. Induksiya vektorining moduli 100 mT bo'lgan bir jinsli magnit maydonining kuch chiziqlariga 30° burchak ostida 2 km/s tezlik bilan uchib kirgan zaryadlangan zarrachaga maydon tomonidan ta'sir etuvchi kuchni (mN) toping. Zarrachaning zaryad miqdori $2\text{ }\mu\text{C}$ ga teng.
A) 0,2 B) 2 C) 4 D) 0,4
13. $0,5\text{ g}$ vodorod va 32 g kislorod aralashmasining bosimi 93 kPa , harorat esa 280 K bo'lgandagi zichligi (kg/m^3) toping. Vodorod va kislorodning molyar massasi mos ravishda 2 va 32 g/mol .
A) 1,04 B) 0,5 C) 1,5 D) 2
14. Tebranish konturi induktivligi $2\text{ }\mu\text{H}$ bo'lgan g'altak va sig'imi 1800 pF bo'lgan kondensatordan iborat kontur qanday to'lqin uzunlikka (m) mo'ljallangan? $c=3\cdot 10^8\text{ m/s}$
A) 100 B) 110 C) 120 D) 130
15. Chaqmoq gaz razryadining qaysi turiga misol bo'ladi?
A) uchqun razryad B) toj razryad
C) miltillama razryad D) elektr yoy razryad
16. Qarshiligi $5\text{ }\Omega$ bo'lgan o'tkazgichning ko'ndalang kesmidan $1,5\text{ min}$ davomida 45 C zaryad miqdori o'tdi. Shu o'tkazgichning uchlaridagi kuchlanishni (V) toping.
A) 2 B) 1 C) 5 D) 2,5
17. O'q miltiqdan 1000 m/s tezlik bilan uchib chiqdi. Bunda tepki ta'sirida miltiq 2 m/s tezlik olsa, o'qning massasi miltiqning massasidan necha marta kichikligini aniqlang.
A) 475 B) 450 C) 500 D) 600
18. Quvvati 25 W va 100 W bo'lgan 2 ta lampochka 220 V kuchlanishda ishlashga muljallangan. Qaysi lampochkaning qarshiligi katta va necha marta?
A) $R_1 = 4R_2$ B) $R_2 = 2R_1$ C) $R_2 = 4R_1$
D) $R_1 = 2R_2$
19. Bir jinsli elektr maydonida α -zarrachasi kuchlanganlik vektorining yo'nalishi bo'ylab ko'chgan bo'lsa uning potensial energiyasi qanday o'zgaradi?
A) avval ortib so'ngra kamayadi
B) o'zgarmaydi C) kamayadi D) ortqdi
20. Gorizontga nisbatan 53° burchak ostida v_0 tezlik bilan otilgan jismning 20 m balandlikdan erkin tushgan jism bilan uchish vaqtlari teng bo'lsa, v_0 ni (m/s) toping. $\cos 53^\circ = 0,6$
A) 16,3 B) 19,2 C) 13,4 D) 12,5
21. Tovush havodan suvga o'tganda tovush to'lqinining uzunligi necha marta o'zgaradi? Tovushning suvdagi tezligi 1480 m/s , havodagi tezligi 340 m/s .
A) 4,35 B) 435 C) 43,5 D) 0,435
22. Yadro nuklonlarga ajratib yuborildi. Bunda energiya yutiladimi yoki ajraladimi?
A) yutilishi ham, ajralishi ham mumkin
B) ajraladi
C) yutiladi
D) og'ir yadrolarda yutiladi, yengil yadrolarda ajraladi
23. Prujinaning 4 mm cho'zish uchun $0,02\text{ J}$ ish bajarish kerak. Shu prujinaning 4 sm cho'zish uchun qancha ish (J) bajarish kerak?
A) 8 B) 2 C) 0,8 D) 20
24. Oyning Yer atrofidagi orbita bo'ylab aylanishidagi tezlanishi nimaga teng (m/s^2)? Yer va Oy markazlari orasidagi masofa 60 Yer radiusiga teng. $G_{Yer} = 10\text{ m/s}^2$ deb hisoblang.
A) $1/36$ B) $1/3600$ C) $1/720$ D) $1/360$
25. Yer sirtidan qanday balandlikda (km) jismning massasi 4 marta kamayadi? $R = 6400\text{ km}$
A) o'zgarmaydi B) 12800 C) 6400
D) 19200

26. Fotoning energiyasi $4,4 \cdot 10^{-19}$ J bo'lgan yorug'lik to'lqin uzunligi $3 \cdot 10^{-7}$ m. Shu muhitning absolut sindirish ko'rsatkichini aniqlang. $h=6,63 \cdot 10^{-34}$ J·s
A) 1,5 B) 2,4 C) 1,6 D) 1,3
27. Ma'lum tezlik bilan harakatlanadigan jismning kinetik energiyasi 50 MJ, impulsi 10 kJ·m/s bo'lsa, massasini (kg) toping.
A) 1 B) 1,5 C) 0,5 D) 2
28. Solenoiddagi tok kuchi 1,5 A bo'lganda, undan 150 mWb magnit oqimi o'tsa, uning induktivligini (Hz) aniqlang.
A) 1 B) 0,1 C) 0,5 D) 0,3
29. Massasi 8 kg bo'lgan snaryad diametri 100 mm bo'lgan to'p stvolidan 600 m/s tezlik bilan uchib chiqdi. Stvoldagi porox gazining o'rtacha bosimi 1 MPa. snaryadning stvoldagi harakat vaqtini (s) aniqlang.
A) 0,55 B) 0,61 C) 0,7 D) 0,92
30. 0,6c tezlik bilan harakatlanayotgan zarraning massasi tinchlikdagi massasiga qaraganda qanchaga ortgan? Zarraning tinchlikdagi massasi m_0 .
A) $1,6m_0$ B) $0,8m_0$ C) $1,25m_0$ D) $0,25m_0$
31. Tinch holatidan boshlab tekis tezlanuvchan harakat qilayotgan jismning 12-sekundda bosib o'tgan yo'li 4-sekundda bosib o'tgan yo'lidan necha marta farq qiladi?
A) 23/9 B) 23/7 C) 9 D) 23/5
32. Marmar plitaning havodagi og'irligi 405 N. Uni suvda ushlab turish uchun qanday kuch (N) kerak? Marmarning zichligi $2,7 \text{ g/sm}^3$, $g=10 \text{ m/s}^2$
A) 405 B) 555 C) 150 D) 255
33. Ballonda 20 mol gaz bo'lsa, undagi molekular sonini toping.
A) $12 \cdot 10^{25}$ B) $1,2 \cdot 10^{25}$ C) $12 \cdot 10^{24}$ D) $1,2 \cdot 10^{24}$
34. 120 V ga mo'ljallangan 40 Vt li lampochka 220 V li tarmoqqa ulanganda normal yonishi uchun unga ketma-ket qilib necha metr $3 \cdot 10^{-4}$ m diametrli nixrom simdan ulash kerak bo'ladi? Nixromning solishtirma qarshiligi $1,1 \cdot 10^{-6} \text{ Om}\cdot\text{m}$.
A) 15,3 B) 10,6 C) 9,3 D) 19,3
35. Shaxta tubida barometr 82 sm.sim.ust. ni, yer sirtida 78 sm.sim.ust. ni ko'rsatayotgan bo'lsa, shaxtaning chuqurligini (m) aniqlang.
A) 40 B) 480 C) 4,8 D) 48
36. Nima uchun izoxorik jarayonda gazning zichligi o'zgarmaydi?
A) *massa va hajm o'zgarmagani uchun*
B) *bosim temperaturaga to'g'ri proporsionalligi uchun*
C) *bosim o'zgargani uchun*
D) *temperatura o'zgargani uchun*

INGLIZ TILI

- Choose the answer which correctly completes the sentence.
Mark and Susan met during their holiday in Sweden. It was love at ... first sight.
A) - B) a C) an D) the
- Choose the answer which correctly completes the sentence.
She was lucky enough to get tickets for the first ... of the hit musical "Cats".
A) *performed* B) *to perform* C) *perform* D) *performance*
- Choose the answer which correctly completes the sentence.
I advise you to buy a Volkswagen
Volkswagen cars are cheap, they last a long time.
A) *despite* B) *as* C) *even though* D) *because*
- Choose the answer which correctly completes the sentence.
You can't have good crops unless you ... the soil. It is usually poor without care and cultivation.
A) *cultivate* B) *will not cultivate* C) *don't cultivate* D) *will cultivate*
- Choose the answer which correctly complete the sentence.
Don't you remember ... the food back last time? It was terrible.
A) *sent* B) *send* C) *sending* D) *to send*

6. Choose the answer which correctly complete the sentence.
After the president of the company had made decision, his resignation ... announced yesterday on television.
A) *has* B) *was* C) *-* D) *have been*
7. Choose the answer which correctly complete the sentence.
Someone broke into their house ... they had left the window open.
A) *because of* B) *because* C) *that* D) *so*
8. Choose the answer which correctly complete the sentence.
I've got three new dresses: a red one and two black dresses. I think I'll wear ... red one.
A) *-* B) *the* C) *a* D) *some*
9. Choose the answer which correctly completes the sentence.
The possibility of losing his money never entered ... his mind.
A) *to* B) *on* C) *-* D) *in*
10. Choose the answer which correctly complete the sentence.
Staying in a hotel costs ... renting a room in a dormitory for a week.
A) *twice as much as* B) *twice more than*
C) *twice more as* D) *as much twice as*
11. Choose the answer which correctly completes the sentence.
There was a conference in the Institute.
A number of teachers ... there.
A) *are sent* B) *be sent* C) *were sent*
D) *is sent*
12. Choose the answer which correctly completes the sentence.
I wish I ... there to see Dan's face when they told him the news.
A) *had been* B) *were* C) *have been*
D) *would have been*
13. Choose the answer which correctly completes the sentence.
That film was released only two days ago, so you ... the film last week.
A) *mustn't see* B) *needn't see*
C) *couldn't see* D) *couldn't have seen*
14. Choose the answer which correctly completes the sentence.
It has been snowing since morning and I'm afraid it ... by Friday.
A) *won't stop* B) *won't have stopped*
C) *doesn't stop* D) *will not be stopping*
15. Choose the answer which correctly completes the sentence.
Even though a great deal of the lawn is open to the sun, there are ... of shade trees to make it comfortable.
A) *none* B) *some* C) *plenty* D) *no*
16. Choose the answer which correctly completes the sentence.
George's father gives him enough money to go to school, so he ... work.
A) *didn't have to* B) *ought not to*
C) *has to* D) *doesn't have to*
17. Choose the answer which correctly completes the sentence.
I don't like cooking, and...
A) *he doesn't neither* B) *either he doesn't*
C) *he doesn't either* D) *he either doesn't*
18. Choose the answer which correctly completes the sentence.
What were you writing when your computer ...?
A) *was crashing* B) *had crashed* C) *crashed*
D) *crash*
19. Choose the answer which correctly completes the sentence.
She'll have the film ... in the city.
A) *to develop* B) *developed* C) *developing*
D) *develop*
20. Choose the answer which correctly completes the sentence.
We invited Peter for dinner yesterday, and he came round ... we were eating.
A) *as soon as* B) *till* C) *while* D) *during*
21. Choose the answer which correctly completes the sentence.
The works of Picasso were quite ... during various periods of his artistic life.
A) *differentiate* B) *differ* C) *different from*
D) *different*

22. Choose the answer which correctly completes the sentence.

One day my mother discovered a bird in the living-room. It ... into the flat through an open window.

- A) *had flown* B) *has flown* C) *was flying*
D) *flew*

23. Choose the answer which correctly completes the sentence.

We knew why Frank ... to Berlin several times.

- A) *was* B) *will be* C) *had been*
D) *has been*

Read the text. Then choose the correct answer to question 24-26.

When the first cars hit British roads in the late 19th century, they had an unusual safety feature. Every "horseless carriage" was guided by a man walking in front waving a red flag to warn other road users of the vehicle's approach. These early precautions, known as the "red flag laws", seem laughable now. However, future generations may look at current safety measures in much the same way. In the US state of Nevada, the government has begun to draft a set of regulations that will allow self-driving vehicles on its roads. These cars will have technological advantages such as cameras that determine exactly where other cars are and how fast they are moving. Promoters of the self-driving cars believe they will save time and fuel, and reduce traffic jams. If these cars become a reality, there may be a dramatic decrease in human drivers on the roads. People who still want the pleasure of driving themselves will someday have to warn other road users that they are engaging in such a dangerous activity. People then might consider reintroducing the red flags.

24. The author of the passage thinks that ...

- A) *many cars will not be driven by humans when unmanned cars come into existence.*
B) *current technology is insufficient to meet safety needs on today's roads.*
C) *road users rely heavily on self-driving cars due to their technological advantages.*
D) *precautions taken by the British were not as effective as those of the Nevada government.*

25. It can be understood from the passage that ...

- A) *promoters of the self-driving cars believe these cars will have several benefits.*
B) *the technical features of self-driving cars will make them expensive at first.*
C) *we need to build special roads for self-driving cars.*
D) *the designs of self-driving cars will be more attractive than current ones.*

26. It is inferred in the passage that ...

- A) *a red flag was generally used to signal the approach of a pedestrian.*
B) *cars were often used to carry equipment when they were first introduced to British roads in the 19th century.*
C) *the Nevada government was inspired by the "red flag laws" while drafting regulations for self-driving cars.*
D) *driving a car yourself may be considered dangerous in the future.*

Read the text. Then choose the correct answer for the gaps 27-28 in the text.

Although they were described as the (27)... designs in many years, there isn't anything very new about the latest line of shoes from Santorelli. As one of the most famous designers in Italy, Salvatore Santorelli is expected to do more than simply repeat the previous year's (28)... formula of "smart, but casual" sandals in a range of pastels.

- 27.

- A) *Italian first new* B) *new first Italian*
C) *first Italian new* D) *first new Italian*

- 28.

- A) *successful* B) *successfully* C) *succession*
D) *success*

Read the text. Then choose the correct answer for the gaps 29-31 in the text.

In 900AD the cities of the Mayan civilization were still prosperous, but a hundred years later they (29)... . A number of theories have been put (30)... to explain this. One theory is that the Mayan ruling class died out because rulers did not work and so became (31)... , and there was nobody to tell the formers what to do.

29.

- A) *had abandoned* B) *abandoned*
 C) *had been abandoned*
 D) *have been abandoned*

30.

- A) *down* B) *at* C) *through* D) *forward*

31.

- A) *health* B) *unhealthy* C) *unhealth*
 D) *healthy*

Read the text. Then choose the correct answer to question 32-33.

On the day of my first piano concert, I became more and more nervous. To help me calm down, my piano teacher told me to place several cabbages in the room where I practiced. I was so eager to get over my nerves that I was willing to try anything. For the next few hours, I played to an audience of cabbages. When the time of the concert came, I was still terribly nervous. My hands felt like ice.

When I finally walked across the stage, I looked out into the dark audience, but I couldn't see anyone. I tried to imagine that all the people sitting in the hall just as well might be cabbages.

As I sat down to play, my hands relaxed and I played all my pieces without a mistake. The concert was a success.

32. The pianist stopped feeling nervous. . .

- A) *as soon as the concert was over*
 B) *because he had practiced a lot*
 C) *when the audience began to applaud*
 D) *when he found he couldn't see the audience*

33. On the day of the concert the teacher . . .

- A) *advised him to put cabbages in the room where he practiced*
 B) *felt nearly as nervous as the pianist*
 C) *couldn't think of a way helping the pianist to stay calm*
 D) *advised him to eat a little cabbage*

Read the text. Then choose the correct answer to question 34-36.

Of the six outer planets, Mars, commonly called the Red Planet, is the closest to Earth. Mars, 4,200 miles in diameter and 55% of the size of Earth, is 34,600,000 miles from Earth, and 141,000,000 miles from the Sun. It takes this planet, along with its two moons, Phobos and Deamos, 1,88 years to circle the Sun, compared to 365 days for the Earth.

For many years, Mars had been thought of as the planet with the man-made canals, supposedly discovered by an Italian astronomer, Schiaparelli, in 1877. With the United States spacecraft Viking I's landing on Mars in 1976, the man-made canal theory was proven to be only a myth.

Viking I, after landing on the soil of Mars, performed many scientific experiments and took numerous pictures. The pictures showed that the red colour of the planet is due to the reddish, rocky Martian soil. No biological life was found, though it had been speculated by many scientists. The Viking also monitored many weather changes including violent dust storms. Some water vapour, polar ice and permafrost (frost below the surface) were found, indicating that at one time there were significant quantities of water on this distant planet. Evidence collected by the spacecraft shows some present volcanic action, though the volcanoes are believed to be dormant if not extinct.

34. Which of the following is not true?

- A) *Mars is larger than Earth*
 B) *It takes longer for Mars to circle the Sun than it takes Earth*
 C) *Mars has two moons*
 D) *Martian soil is rocky*

35. Man-made canals were supposedly discovered by ...
- A) *Phobos*
 - B) *Viking I*
 - C) *Schiaparelli*
 - D) *Martian*

36. Mars has been nicknamed as ...
- A) *Martian*
 - B) *Deimos*
 - C) *Viking I*
 - D) *The Red Planet*